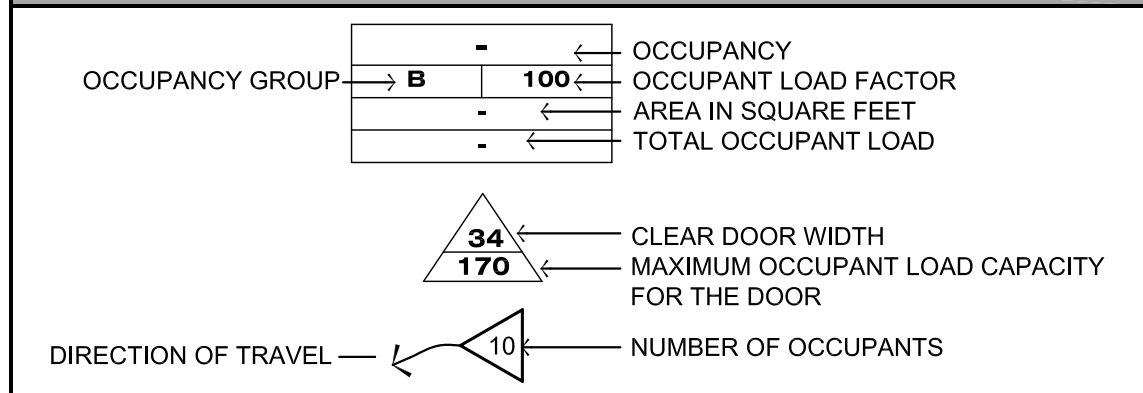


EXIT PLAN LEGEND



OCCUPANCY CALCULATION

IBC 2012, SEC 1004

OCCUPANCY:	HAIR SALON AREA (5,383 SF)	OCCUPANCY LOAD FACTOR	NO. OF OCCUPANTS
OCCUPANCY "B" (SALONS)	3,204 SF	100	32
OCCUPANCY "B" (BREAK ROOM)	77 SF	15	5
OCCUPANCY "B" (OFFICE)	52 SF	100	1
OCCUPANCY "B" (LAUNDRY)	76 SF	300	1
OCCUPANCY "B" (LOBBY)	260 SF	15	15
OCCUPANCY "B" (HALLWAYS AND TOILETS)	1,723 SF		
TOTAL OCCUPANT LOAD:			54 OCCUPANTS

NUMBER OF REQUIRED EXITS (TABLE 1015.1)
 OCCUPANCY B 54 OCCUPANTS > 49
 2 EXIT REQUIRED
 3 EXITS PROVIDED

PLUMBING FIXTURES COUNT

OCCUPANCY "B" NO. OF OCCUPANTS = 54 MEN = 50% = 27 WOMEN = 50% = 29 (P) 2902.1.1 EXCEPTION	REQUIRED			PROVIDED		
	M	W	X	M	W	X
LAVATORY (1 PER 40)	1	1		1	1	1
WC (1 PER 25)	1	1	1	1	1	1
URINAL (50%)	0			0		
SERVICE SINK (1 PER 500)			1	1		1

GENERAL NOTE

- A. NO FURNITURE SHALL BE PLACED TO BLOCK REQUIRED ACCESSIBILITY ROUTE AND MANEUVERING CLEARANCES.
- B. NO FIXTURES, SHELVES, FURNITURE OR OTHER MATERIALS SHALL BE PLACED TO OBSTRUCT ACCESS OR TO PROPER OPERATION OF ANY FIRE PROTECTION EQUIPMENT.

Project: _____

HAIR SALON

Seal: _____

Revision:
No. Date Description

Issue:
Date Description

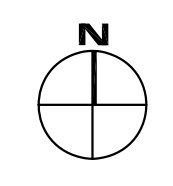
Project Number: _____

Title: _____

Sheet: _____

EXIT PLAN PLAN

SCALE: 3/16" = 1'-0"





KEYNOTES

1. EXISTING FIRE EXIT TO REMAIN
2. EXISTING STEEL COLUMN TO REMAIN
3. EXISTING ALUMINUM STORE FRONT TO REMAIN
4. EXISTING GLASS DOOR TO REMAIN
5. EXISTING METAL DOOR TO REMAIN
6. EXISTING EXTERIOR WALL TO REMAIN
7. EXISTING PARTITION WALL TO REMAIN
8. EXISTING DOOR TO REMAIN
9. MOP SINK
10. NOT USED
11. 18" HIGH PLATFORM
12. ELECTRICAL PANEL, REFER TO ELECTRICAL
13. ADA COUNTER @ 30" A.F.F.
14. WATER HEATER
15. NOT USED
16. NOT USED
17. NOT USED
18. NOT USED
19. NOT USED
20. NOT USED
21. SHAMPOO CHAIR, REFER TO PLUMBING
22. COUNTER @ 42" A.F.F.
23. NOT USED
24. NOT USED
25. NOT USED
26. NOT USED
27. WALL MOUNTED FIRE EXTINGUISHER, 2A10BC

LEGEND

- INTERIOR ELEVATIONS
- SLOPE FINISHED FLOOR TO DRAIN
- DOOR NUMBERS TAG, SEE DOOR SCHEDULE REFER TO SHEET A-6
- WINDOW NUMBERS TAG, SEE WINDOW SCHEDULE REFER TO SCHEDULE A-6
- ROOM NAME TAG, SEE ROOM FINISH SCHEDULE REFER TO SCHEDULE A-6
- CONSTRUCTION SYSTEM TYPES TAG REFER TO SHEET D-1
- KEYNOTES

CONSTRUCTION SYSTEMS

- FOR CONSTRUCTION SYSTEMS DETAILS REFER TO SHEET D-1
- EXISTING EXTERIOR WALLS.
 - EXISTING PARTITION WALLS.
 - EXISTING STOREFRONT TO REMAIN (TEMPERED GLASS).
 - INTERIOR WALLS
2 X 4" STUDS @ 24" O.C.
WITH 5/8" GYPSUM BOARD EACH SIDE, U.N.O.
 - INTERIOR WALLS
2 X 6" STUDS @ 24" O.C.
WITH 5/8" W.R. GYPSUM BOARD EACH SIDE.
 - FURRING
2 X 4" STUDS @ 24" O.C.
WITH 5/8" GYPSUM BOARD.
 - PONY WALL
2 X 4" STUDS @ 16" O.C.
WITH 5/8" GYPSUM BOARD EACH SIDE, U.N.O.

Project:

HAIR SALON

Sheet:

Revision:
No. Date Description

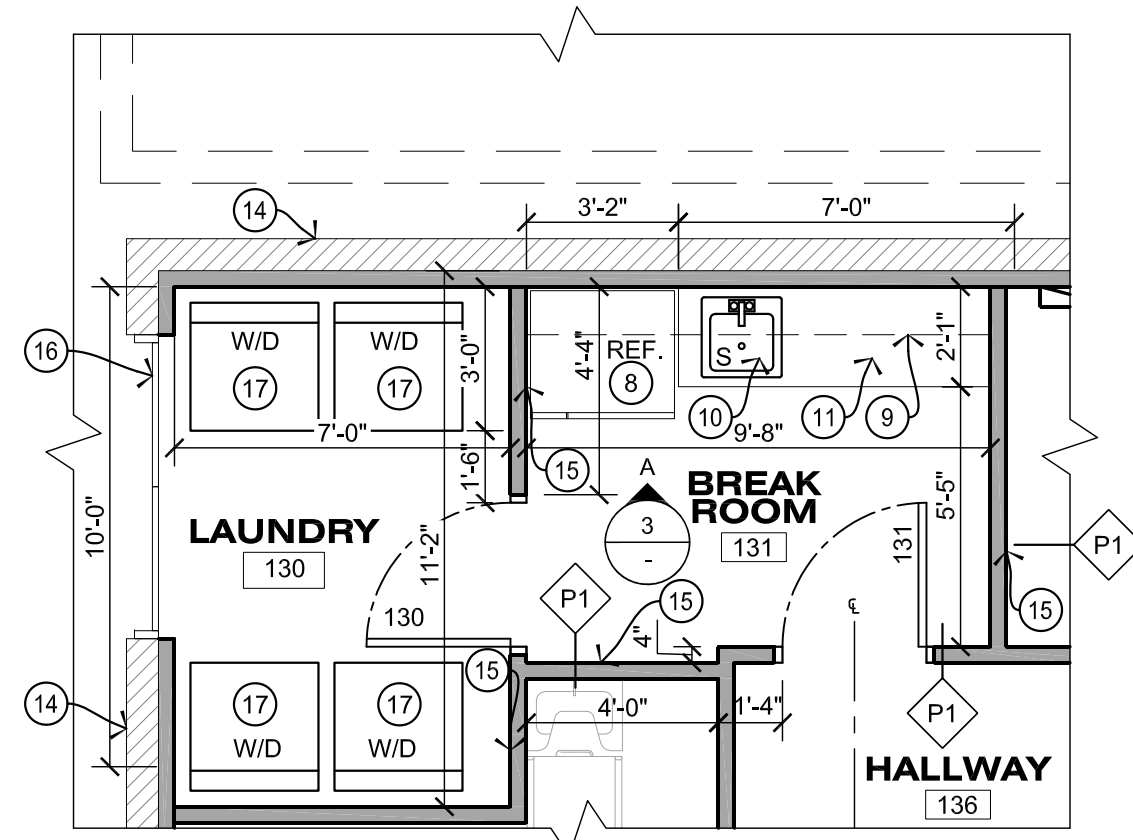
Issue:
Date Description

Project Number:

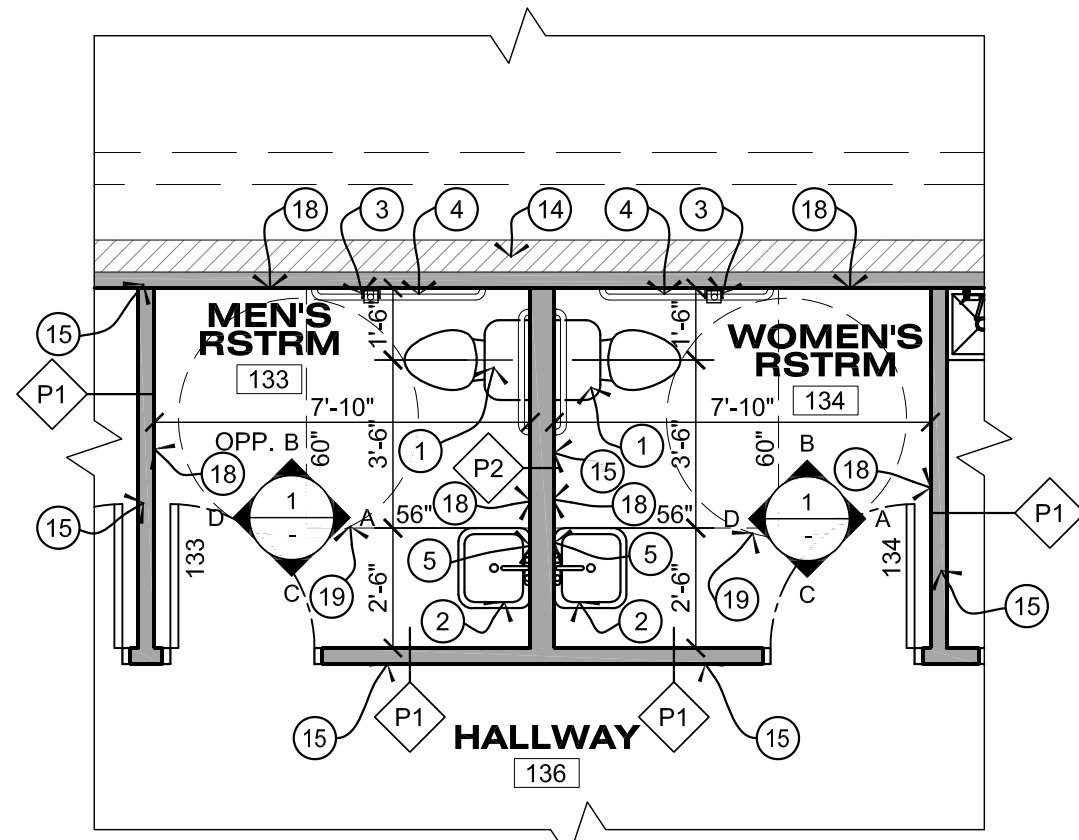
Title:

New Floor Plan

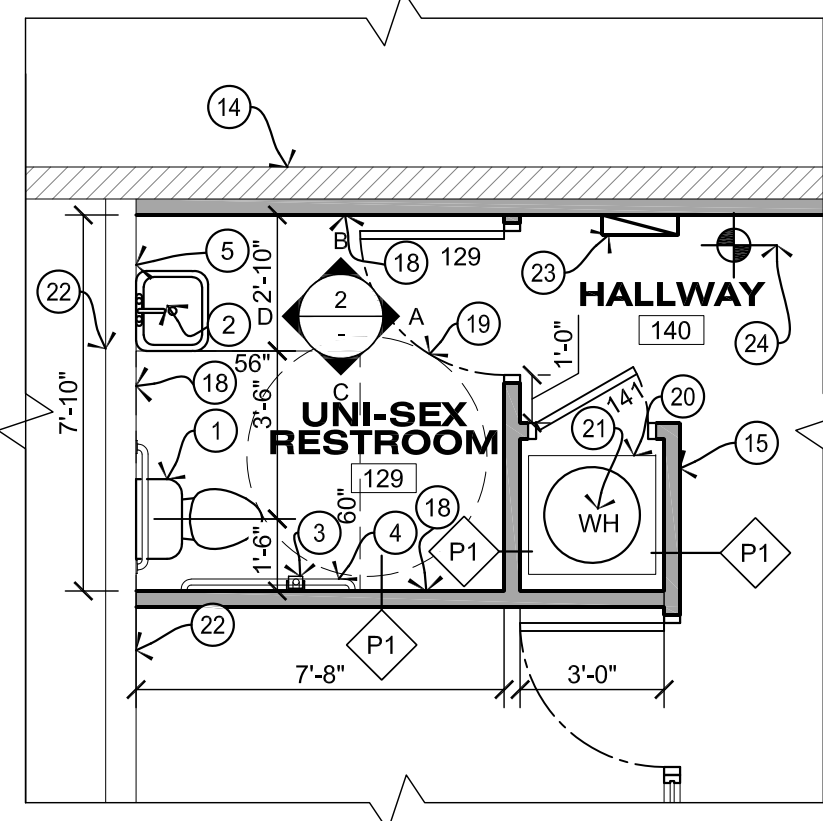
Sheet:



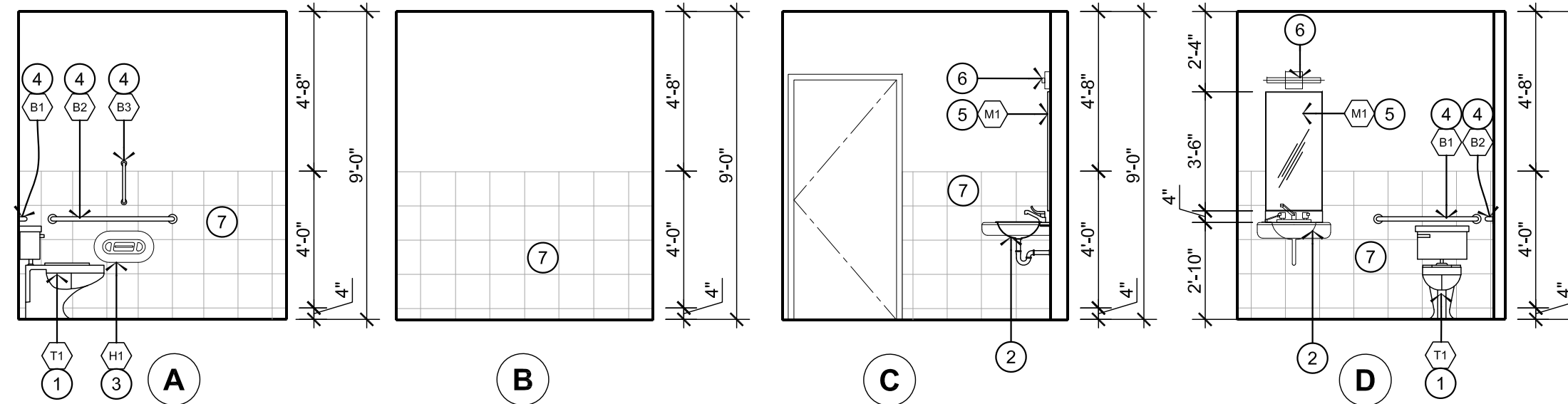
6 ENLARGED FLOOR PLAN
SCALE: 1/4" = 1'-0"



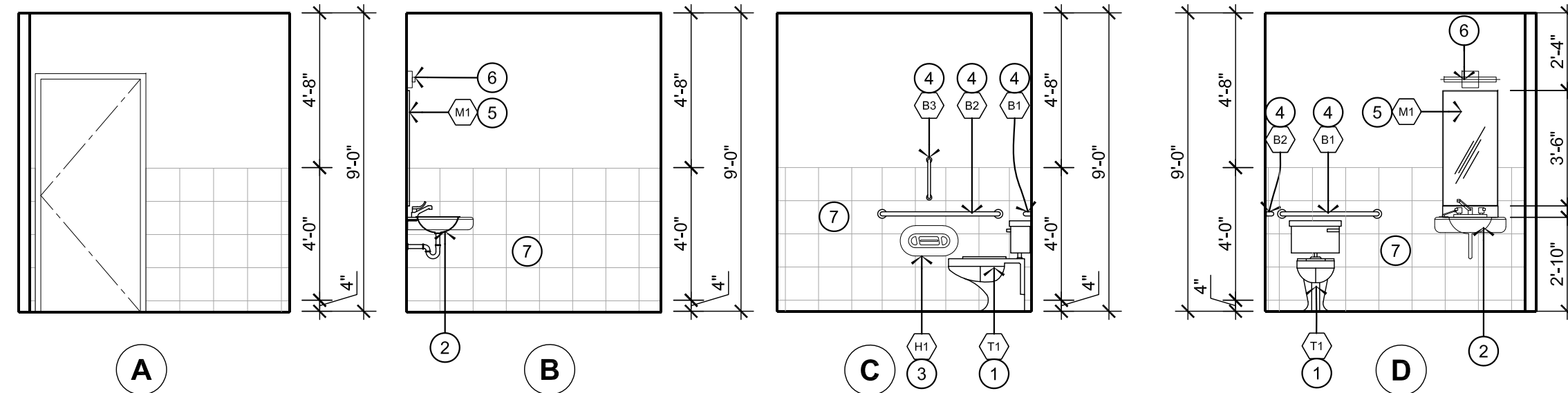
7 ENLARGED FLOOR PLAN
SCALE: 1/4" = 1'-0"



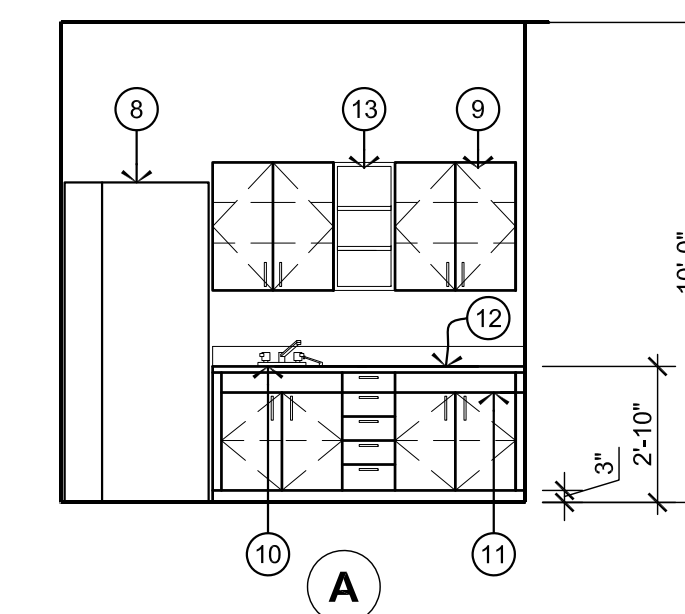
8 ENLARGED FLOOR PLAN
SCALE: 1/4" = 1'-0"



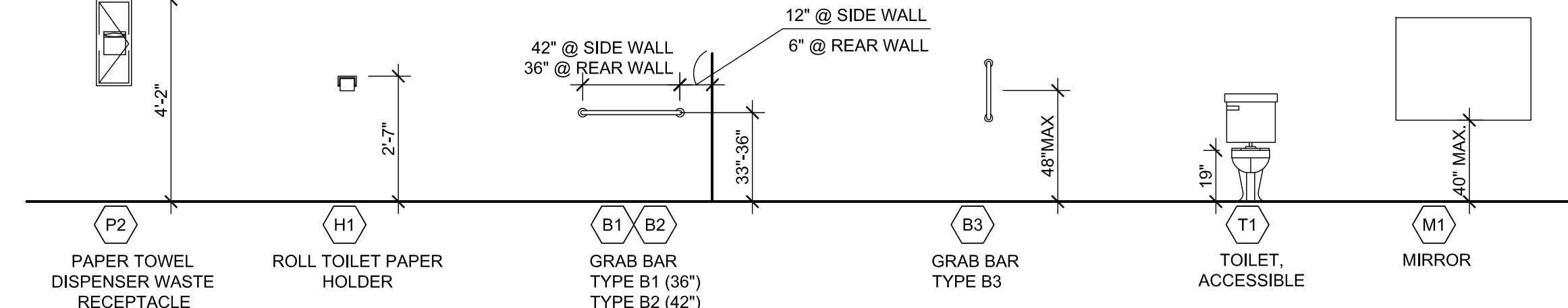
1 WOMEN'S RESTROOM - OPPOSITE MEN'S RESTROOM
SCALE: 1/4" = 1'-0"



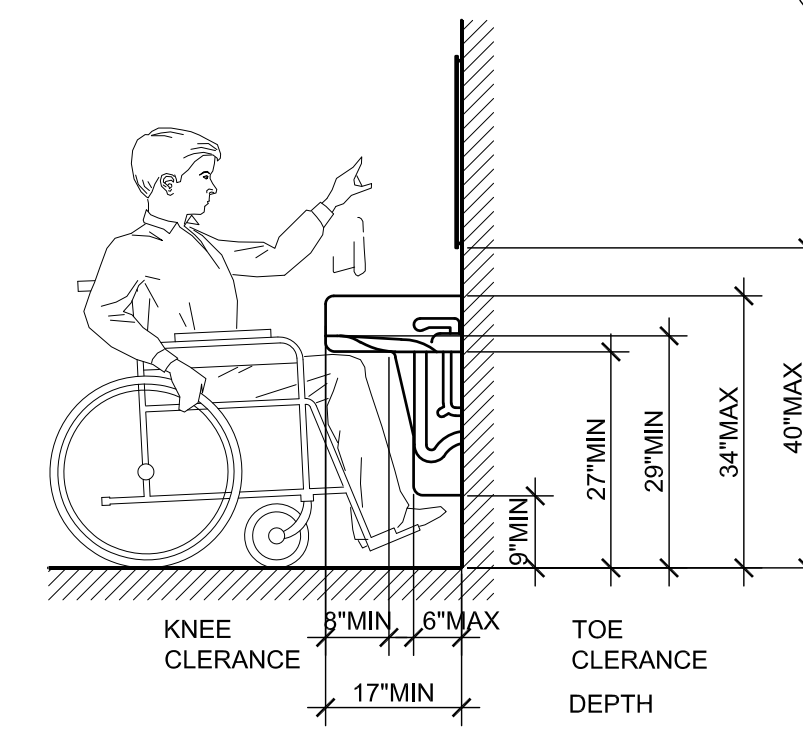
2 UNI-SEX RESTROOM
SCALE: 1/4" = 1'-0"



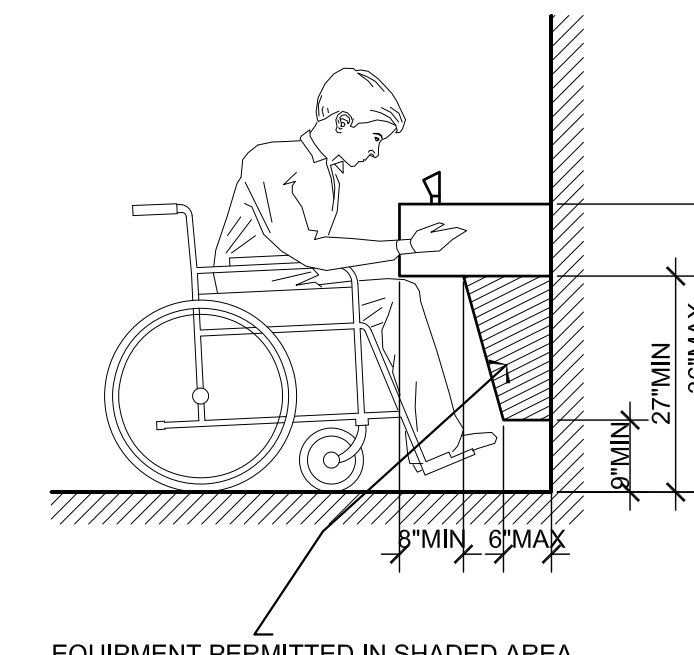
3 BREAK ROOM
SCALE: 1/4" = 1'-0"



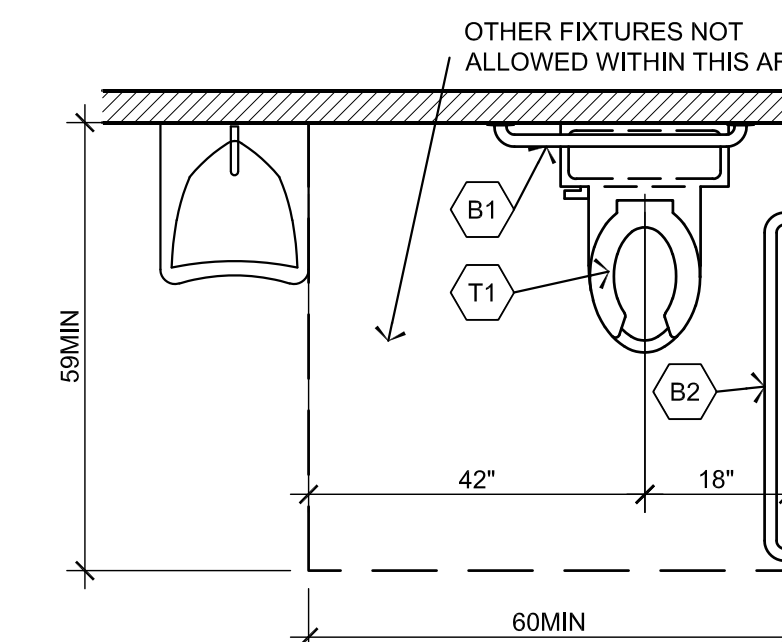
4 TOILET ACCESSORIES / PLUMBING FIXTURES MOUNTING HEIGHTS
SCALE: 3/8" = 1'-0"



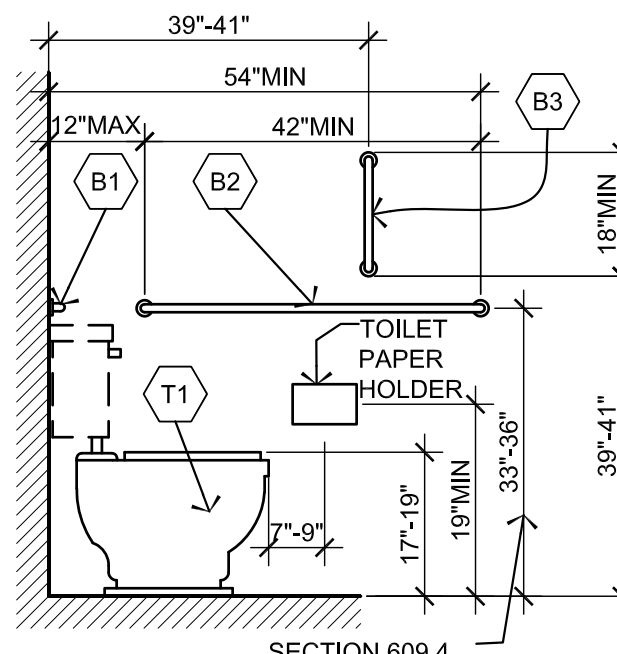
LAVATORY CLEARANCES



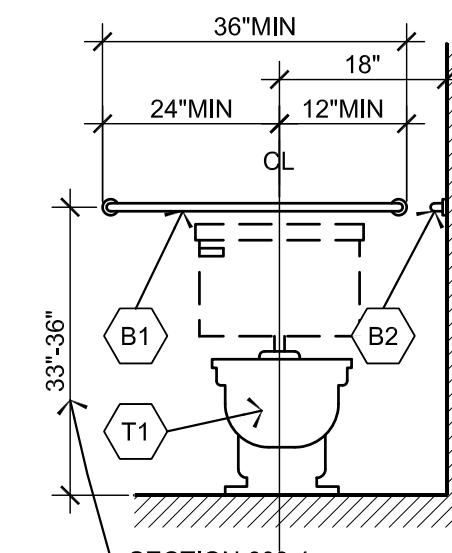
SPOUT HEIGHT & KNEE CLEARANCE



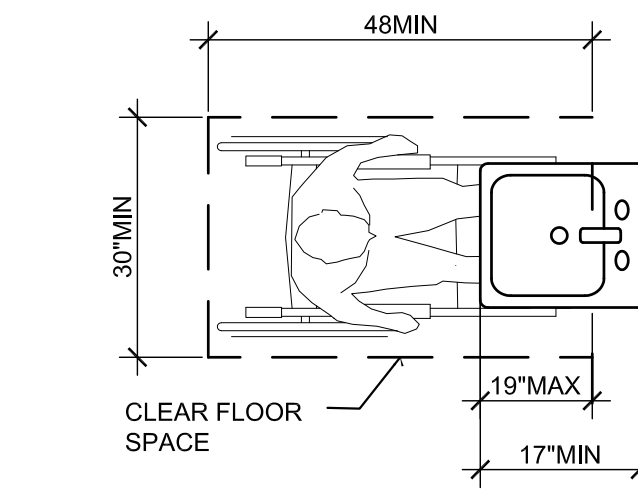
SIZE FOR CLEARANCE FOR WATER CLOSET



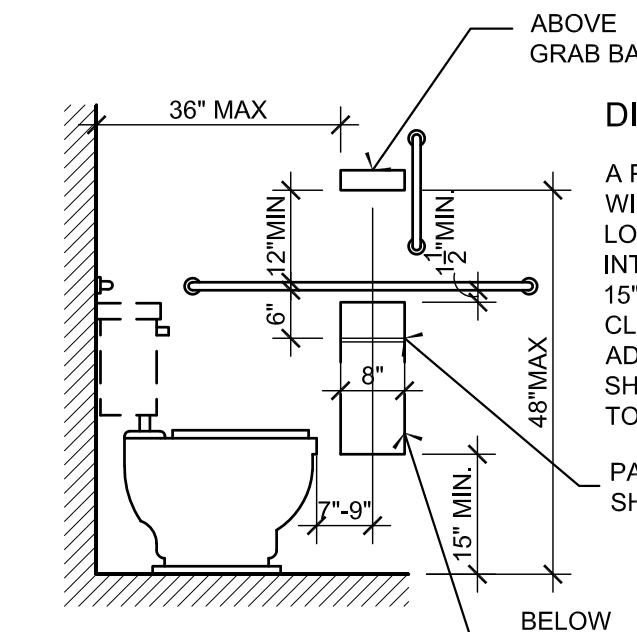
SIDE WALL GRAB BAR FOR WATER CLOSET



REAR WALL GRAB BAR FOR WATER CLOSET



CLEAR FLOOR SPACE AT LAVATORIES



DISPENSER LOCATION

5 ADA REGULATIONS
SCALE: 1/2" = 1'-0"

ADA REGULATION

PROJECT SHALL COMPLY WITH IBC 3409.6 FOR ACCESSIBLE UPGRADES UP TO 20% OF JOB COST

KEYNOTES

1. WATER CLOSET, REFER TO PLUMBING
2. LAVATORY, REFER TO PLUMBING
3. TOILET PAPER HOLDER
4. GRAB BAR
5. MIRROR
6. VANITY LIGHT FIXTURE
7. CERAMIC TILE AT 4'-4" A.F.F.
8. REFRIGERATOR, PROVIDE 1/4" C.W. LINE FOR ICE MAKER
9. UPPER CABINETS
10. KITCHEN SINK, REFER TO PLUMBING
11. BASE CABINETS, FINISHES TO BE SELECTED BY ARCHITECT / TENANT
12. PLASTIC LAMINATE COUNTERTOP AT 34" A.F.F. FINISHES TO BE SELECTED BY ARCHITECT / TENANT
13. SHELVES
14. EXISTING EXTERIOR WALL TO REMAIN
15. NEW INTERIOR WALL
16. EXISTING DOOR TO REMAIN
17. NEW STACKED WASHER & DRYER
18. W.R. GYP. BOARD AND CERAMIC TILE
19. 60" DIAM. ADA TURNING CLEARANCE
20. 18" HIGH PLATFORM
21. WATER HEATER
22. EXISTING PARTITION WALL TO REMAIN
23. ELECTRICAL PANEL, REFER TO ELECTRICAL
24. WALL MOUNTED FIRE EXTINGUISHER, 2A10BC
25. ADA CLEARANCE 56"X60"

LEGEND

- INTERIOR ELEVATIONS
- SLOPE FINISHED FLOOR TO DRAIN
- DOOR NUMBERS TAG SEE DOOR SCHEDULE REFER TO SHEET A-6
- WINDOW NUMBERS TAG, SEE WINDOW SCHEDULE REFER TO SCHEDULE A-6
- ROOM NAME TAG, SEE ROOM FINISH SCHEDULE REFER TO SCHEDULE A-6
- CONSTRUCTION SYSTEM TYPES TAG REFER TO SHEET D-1
- KEYNOTES

Project:

HAIR SALON

Sheet:

Revision:
No. Date Description

Issue:
Date Description

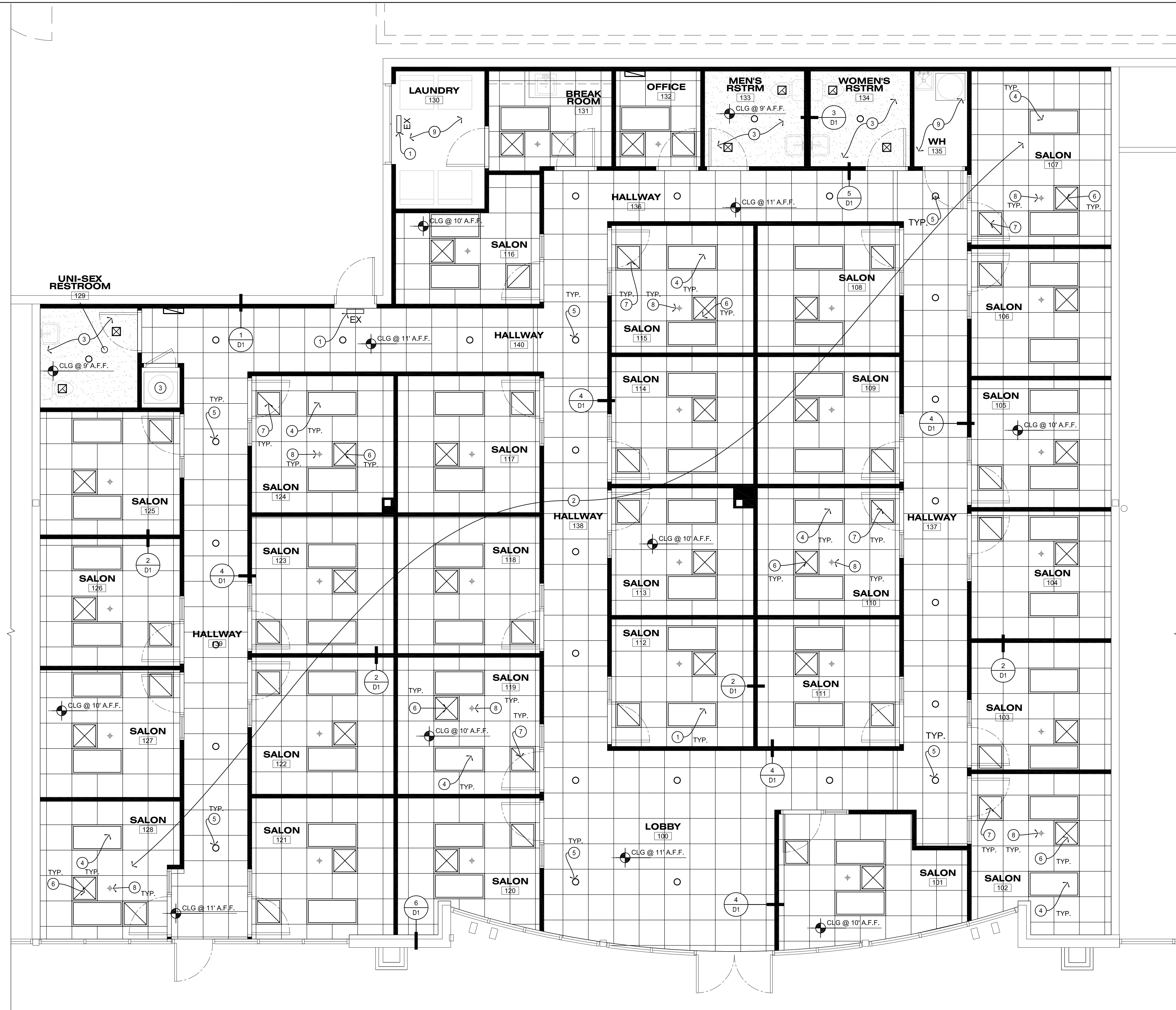
Project Number:

Title:

Interior Elevations

Sheet:

A-4



- ### KEYNOTES
- EXISTING EXIT LIGHT
 - NEW 24" X 24" ACOUSTICAL CEILING TILES
 - NEW GYP. BOARD CEILING
 - NEW FLUORESCENT LIGHT FIXTURE, REFER TO ELECTRICAL
 - NEW 6" DIAM. RECESSED LIGHT
 - NEW AIR SUPPLY GRILLE, REFER TO MECHANICAL
 - NEW AIR RETURN GRILLE, REFER TO MECHANICAL
 - NEW FIRE SPRINKLERS
 - OPEN TO STRUCTURE ABOVE

- ### RCP GENERAL NOTES
- CEILING HEIGHTS NOTED ARE MEASURED FROM FINISH FLOOR OF ROOM. CEILING GRID IS TO REMAIN AS IS.
 - CENTER ALL LIGHT FIXTURES, MECHANICAL DIFFUSERS/GRILLES, ETC. ON THE CENTERLINE OF ALL OTHER CEILING ITEMS. CONTACT ARCHITECT WHERE INTENT IS UNCLEAR.
 - LOCATE CONTROL JOINT WHERE SHOWN ON THE DRAWINGS, WHERE PROVIDED IN EXISTING CONSTRUCTION AND WHERE:
 - CEILING ABUTS A STRUCTURAL ELEMENT, DISSIMILAR WALL OR PARTITION OR OTHER VERTICAL PENETRATION.
 - CONSTRUCTION CHANGES WITHIN PLANES OF THE CEILING.
 - CEILING RUNS WHICH EXCEED 30 LINEAL FEET.
 - ALL FIRE SPRINKLER HEADS. THERE ARE NO CHANGES TO FIRE SPRINKLER SYSTEM.

- ### LEGEND
- KEYNOTES
 - EXISTING EXTERIOR OR INTERIOR WALL TO REMAIN
 - EXISTING DOOR TO REMAIN
 - NEW ACOUSTICAL CEILING GRID.
 - NEW FLUORESCENT LIGHT FIXTURES.
 - RECESSED LIGHT
 - AIR RETURN GRILLE
 - AIR SUPPLY GRILLE
 - EXISTING EXIT LIGHT TO REMAIN
 - NEW FIRE SPRINKLERS

Project:
HAIR SALON

Seal:

Revision:		
No.	Date	Description

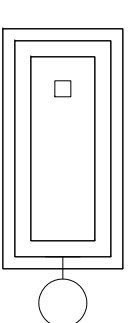
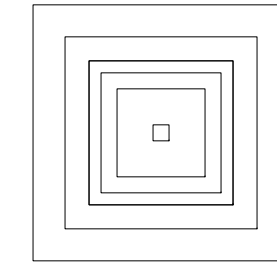
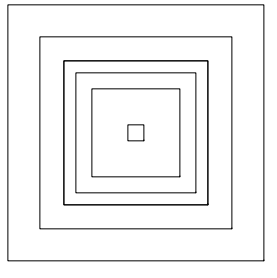
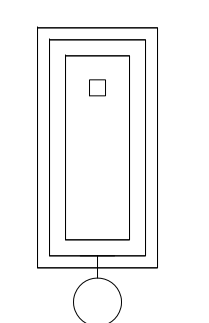
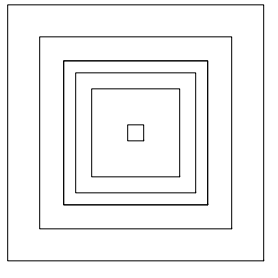
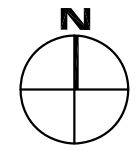
Issue:
Date Description

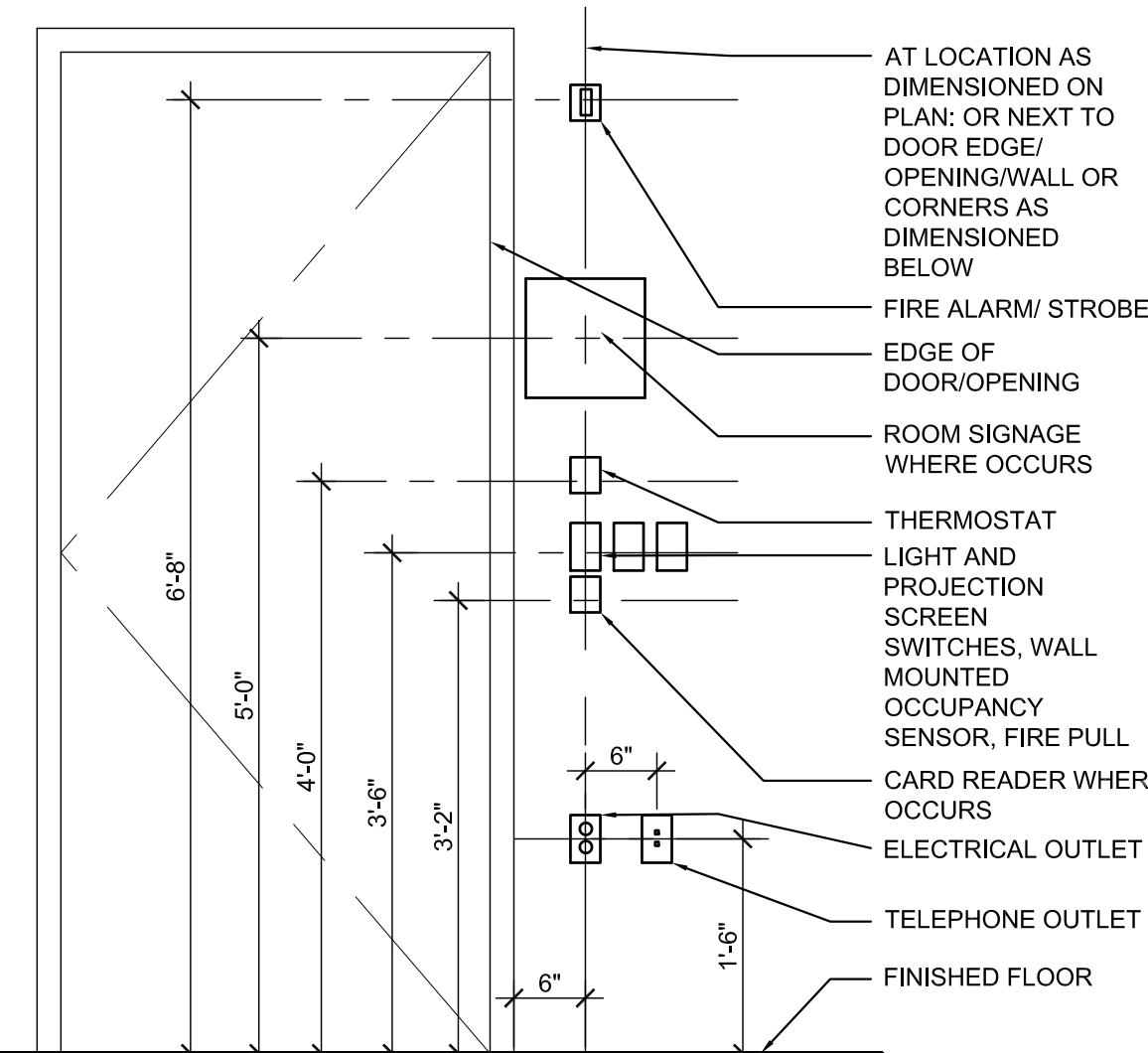
Project Number:

Title:
Reflected Ceiling Plan

REFLECTED CEILING PLAN

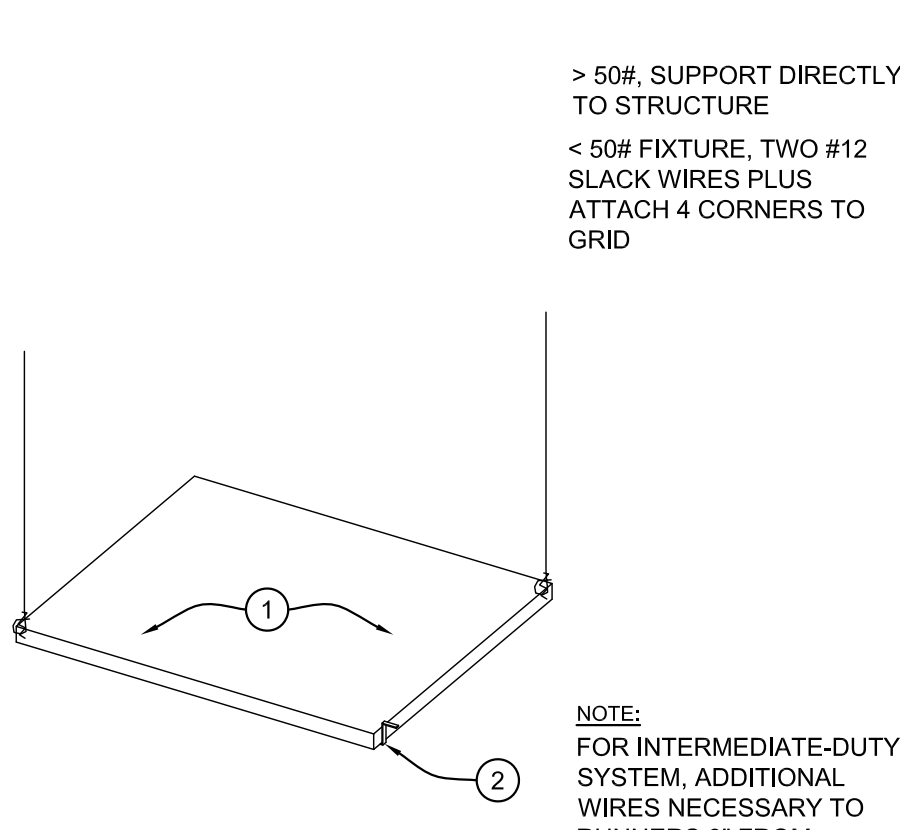
SCALE: 1/4" = 1'-0"





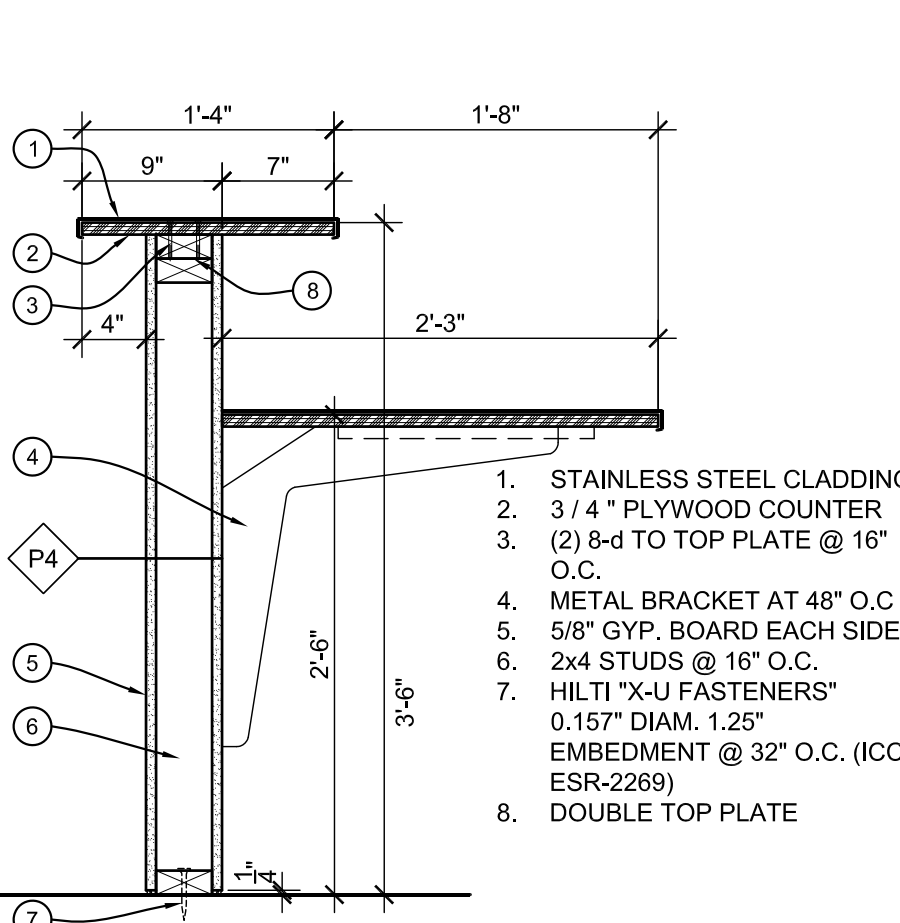
NOTE:
 1. LOCATE SWITCH PLATES, ELECTRICAL AND TELEPHONE WALL OUTLETS AT THE NEAREST STUD FROM THE SCALED LOCATION ON PLAN, UNLESS SPECIFICALLY DIMENSIONED ON PLAN. ELEVATION OR LOCATED PER DIAGRAM ABOVE.
 2. CENTER FIRE ALARM STROBES DIRECTLY ABOVE FIRE EXTINGUISHER CABINETS WHERE BOTH OCCUR.

12 GENERAL DEVICE ALIGNMENT
 SCALE: 3/4"=1'-0" w001-01

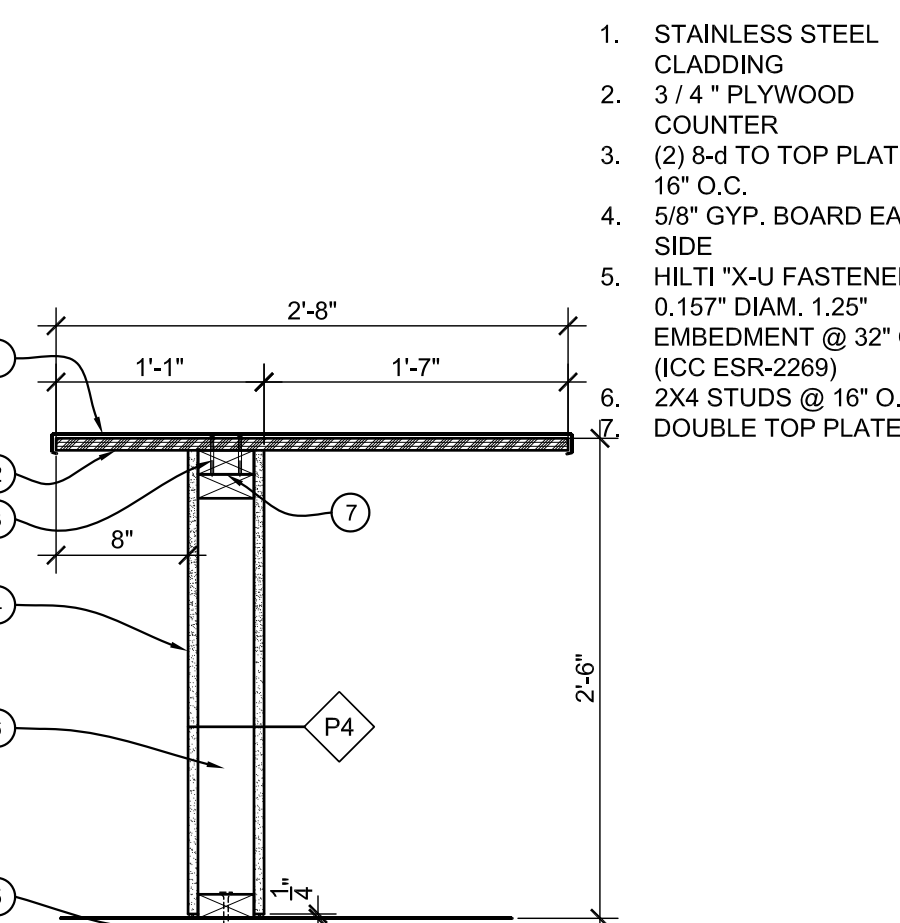


> 50#, SUPPORT DIRECTLY TO STRUCTURE
 < 50# FIXTURE, TWO #12 SLACK WIRES PLUS ATTACH 4 CORNERS TO GRID

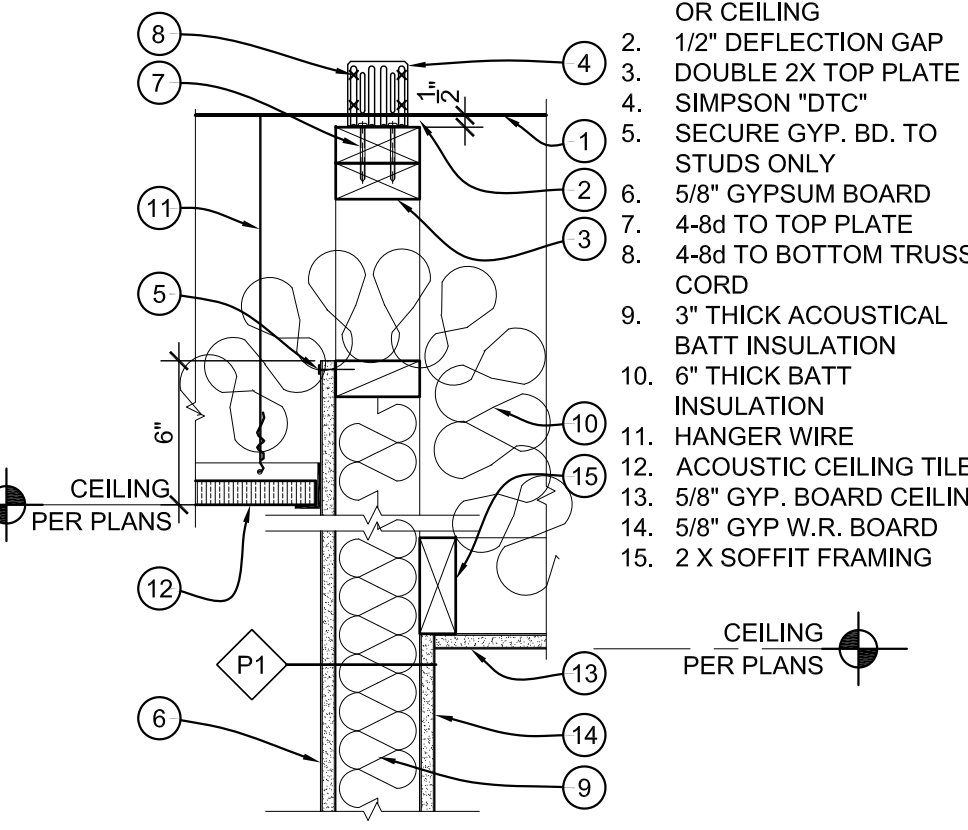
9 LIGHT FIXTURE SUPPORT
 SCALE: 1-1/2"=1'-0"



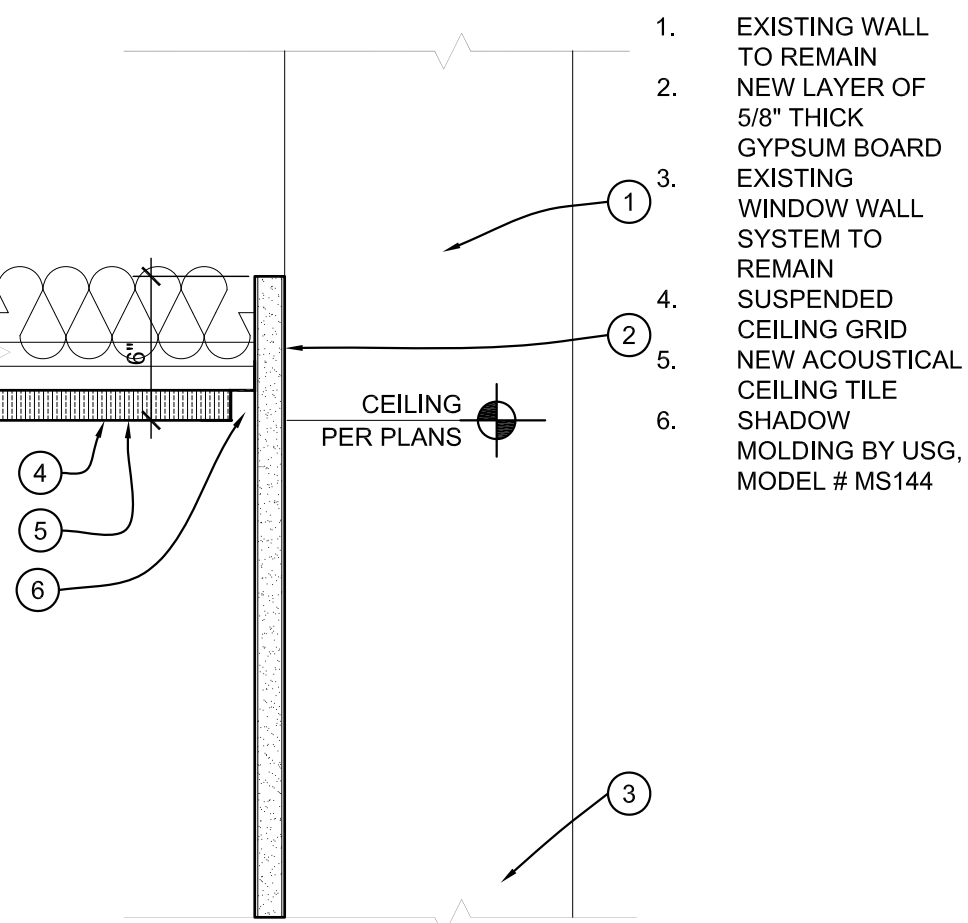
10 SECTION @ COUNTER
 SCALE: 1"=1'-0"



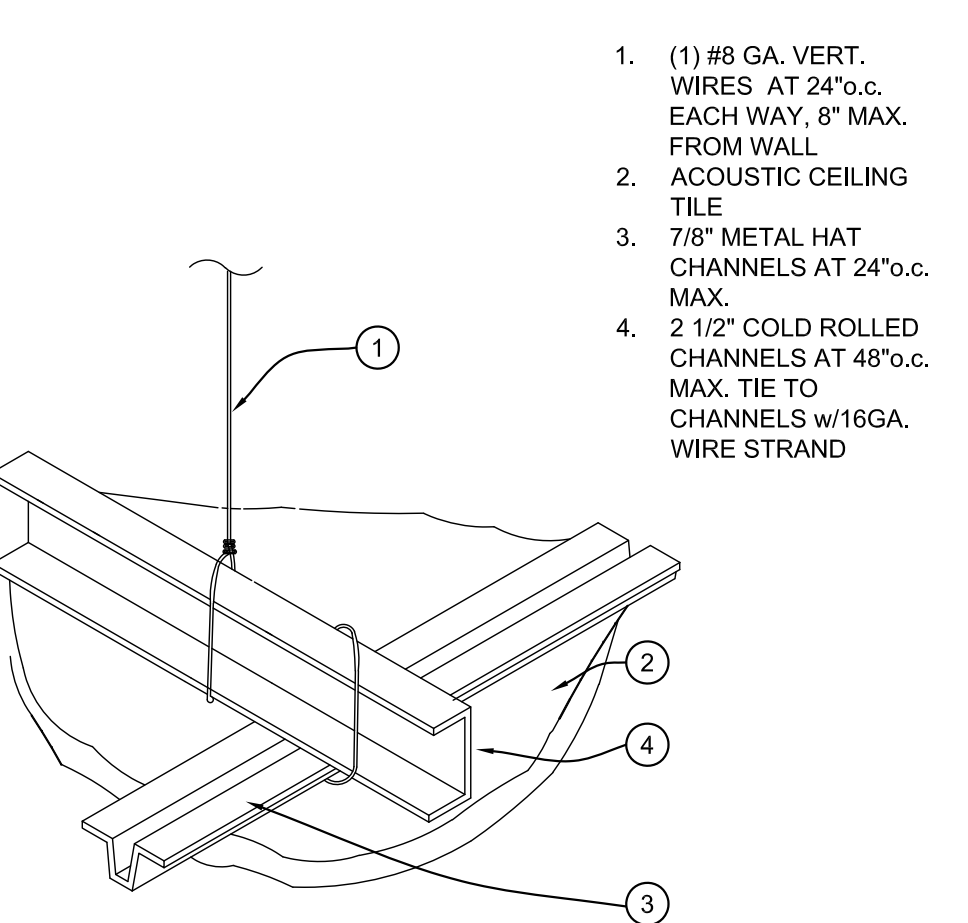
11 SECTION @ COUNTER
 SCALE: 1"=1'-0"



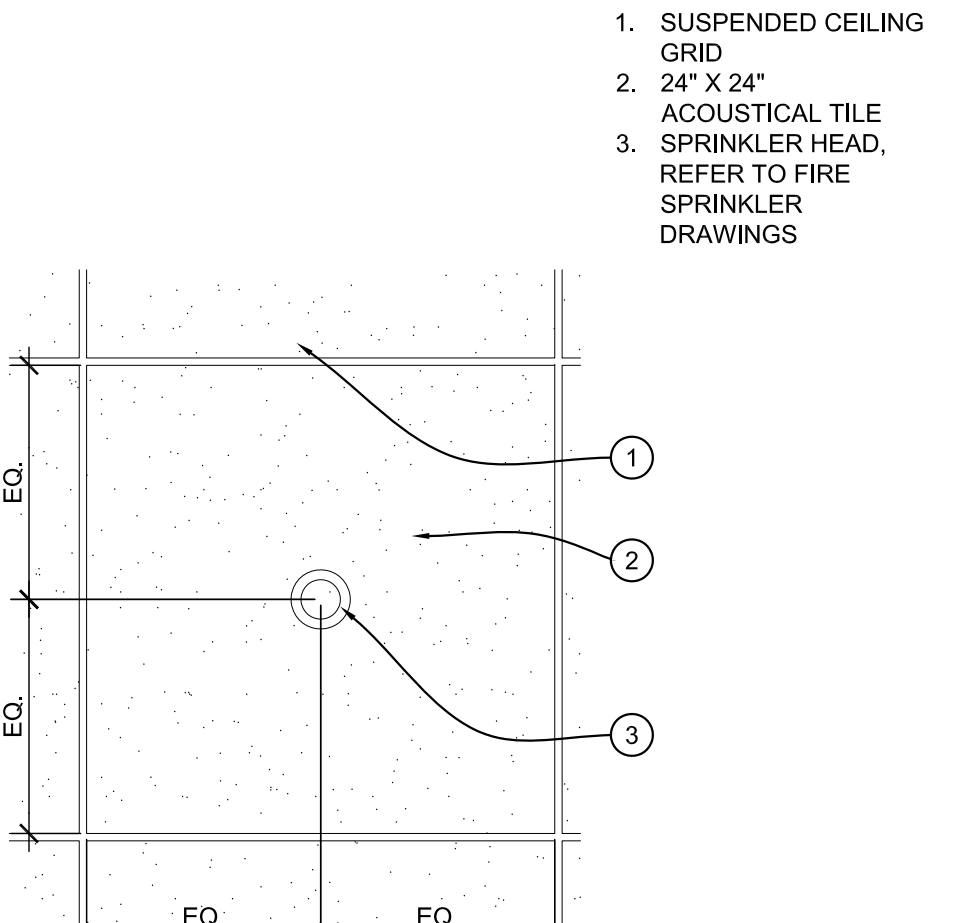
5 CEILING TO PARTITION WALL
 SCALE: 1-1/2"=1'-0"



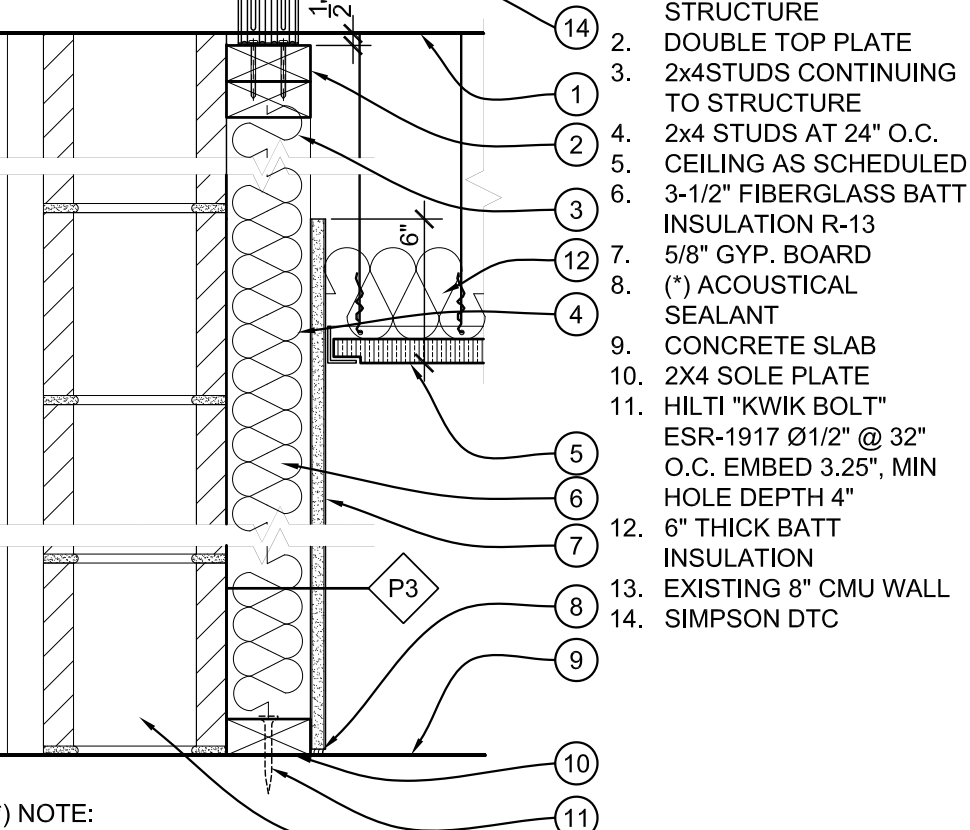
6 ACOUSTICAL CEILING TO EXISTING WALL
 SCALE: 1-1/2"=1'-0"



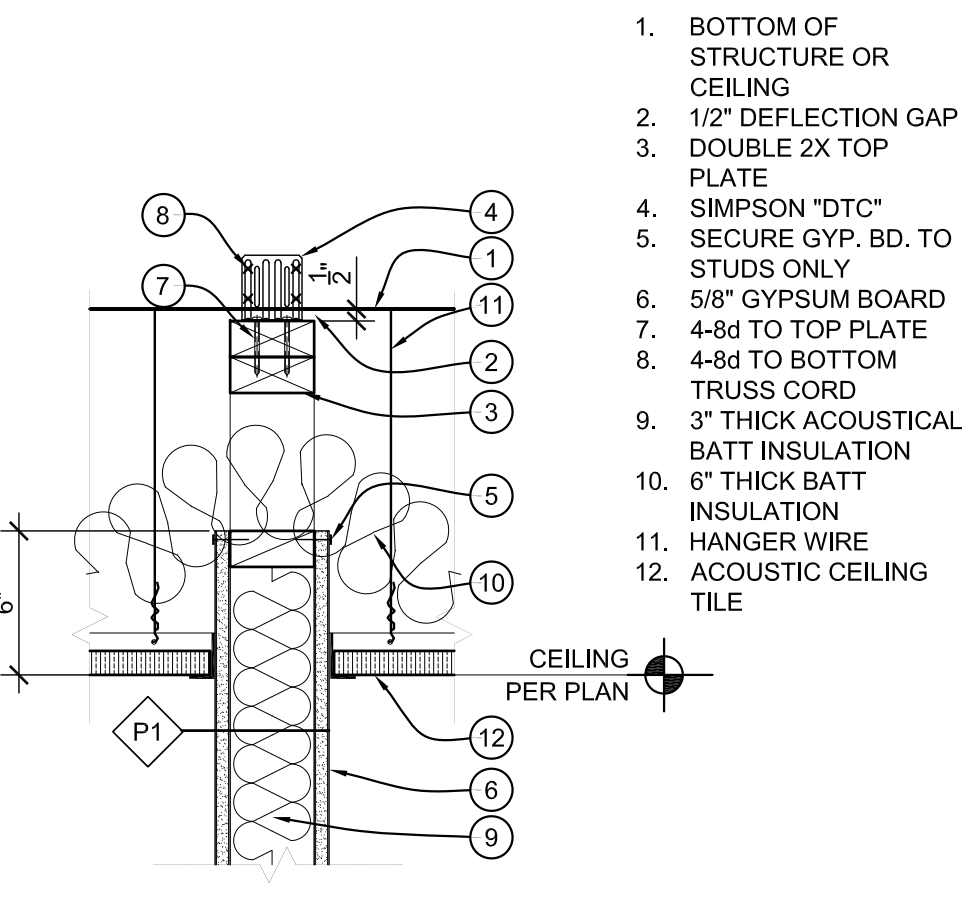
7 SUSPENDED ACOUSTIC CEILING
 SCALE: 1-1/2"=1'-0"



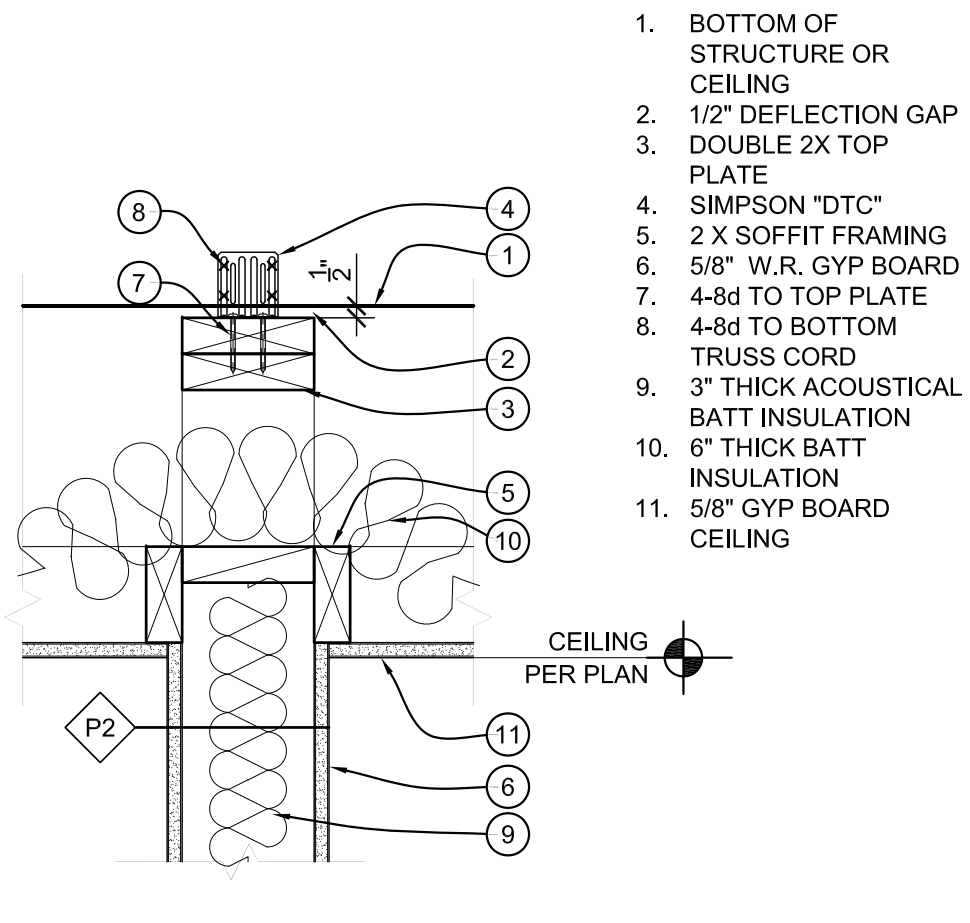
8 SPRINKLER HEAD DETAIL
 SCALE: 1-1/2"=1'-0"



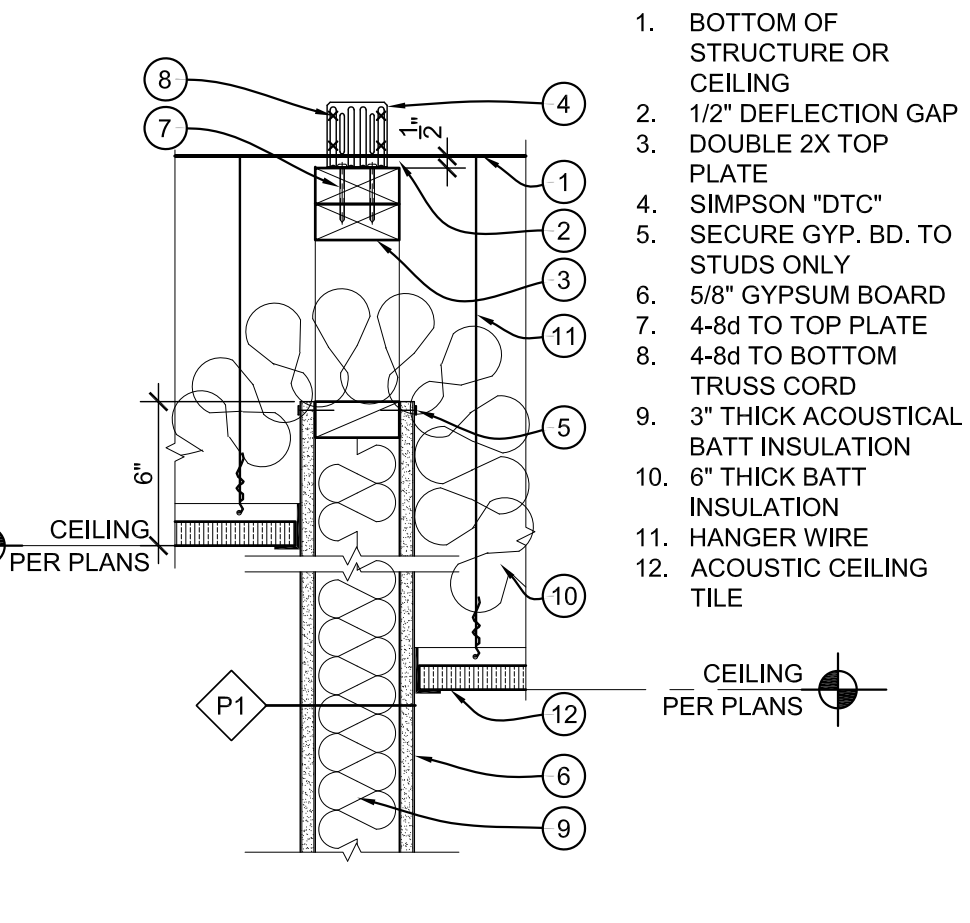
1 ACOUSTICAL CEILING TO EXISTING WALL
 SCALE: 1-1/2"=1'-0"



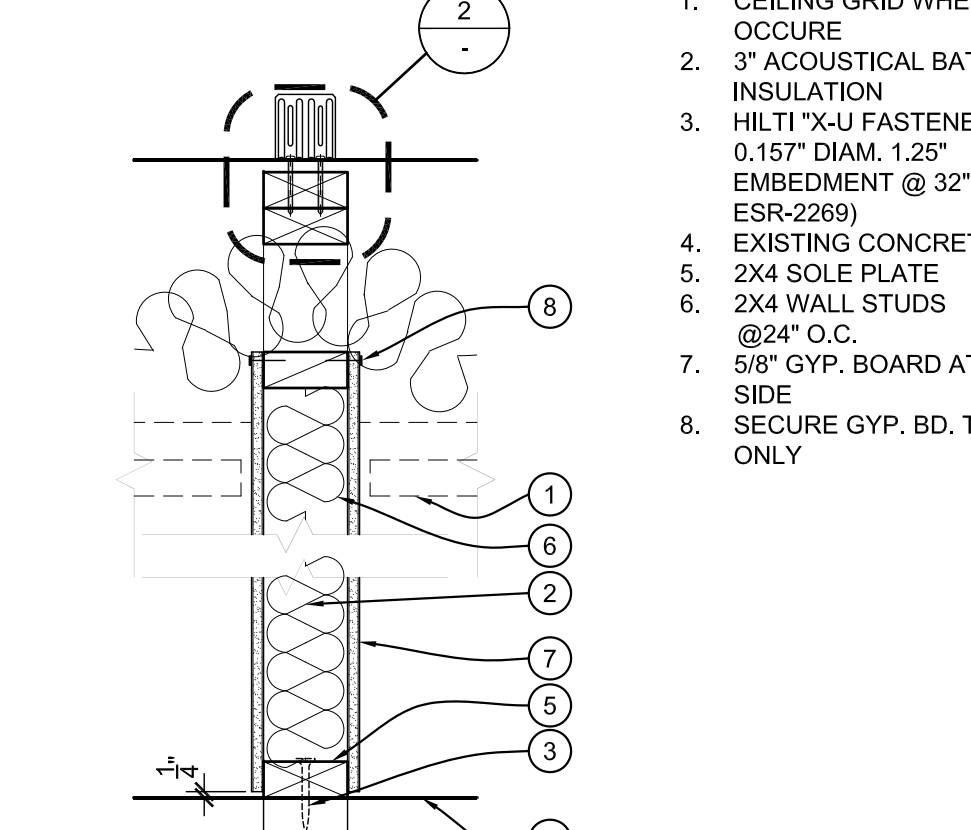
2 CEILING TO PARTITION WALL
 SCALE: 1 1/2"=1'-0"



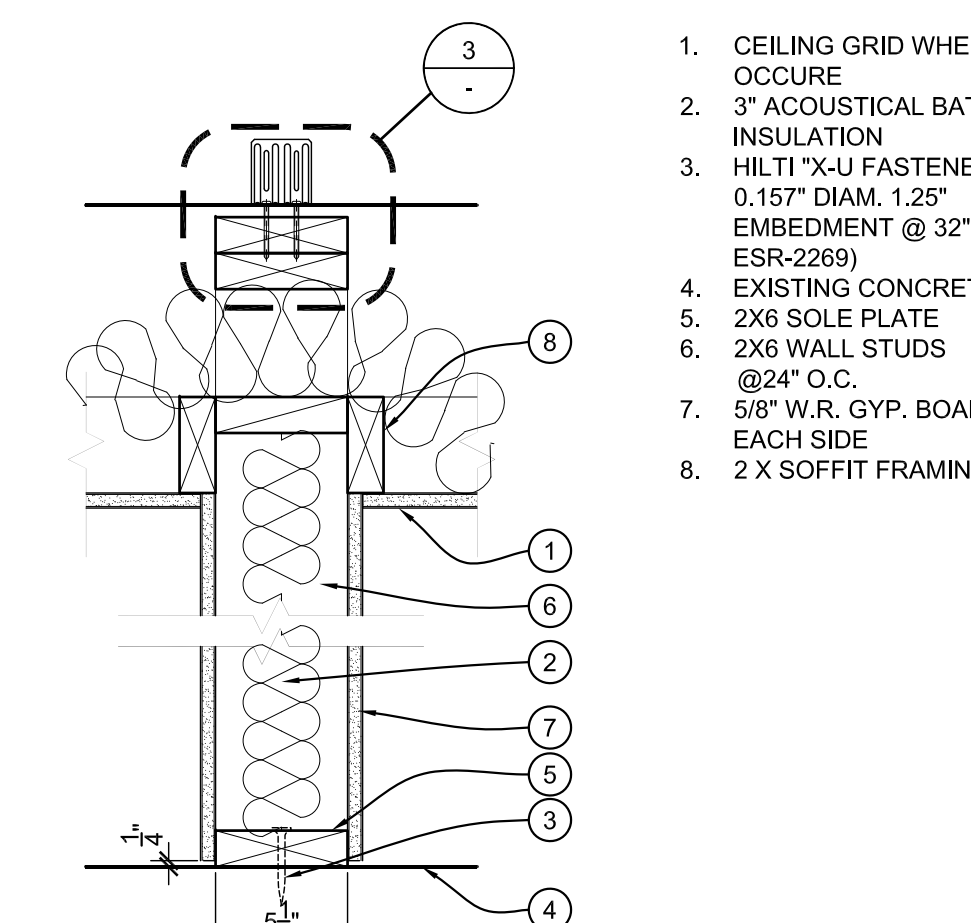
3 CEILING TO PARTITION WALL
 SCALE: 3"=1'-0"



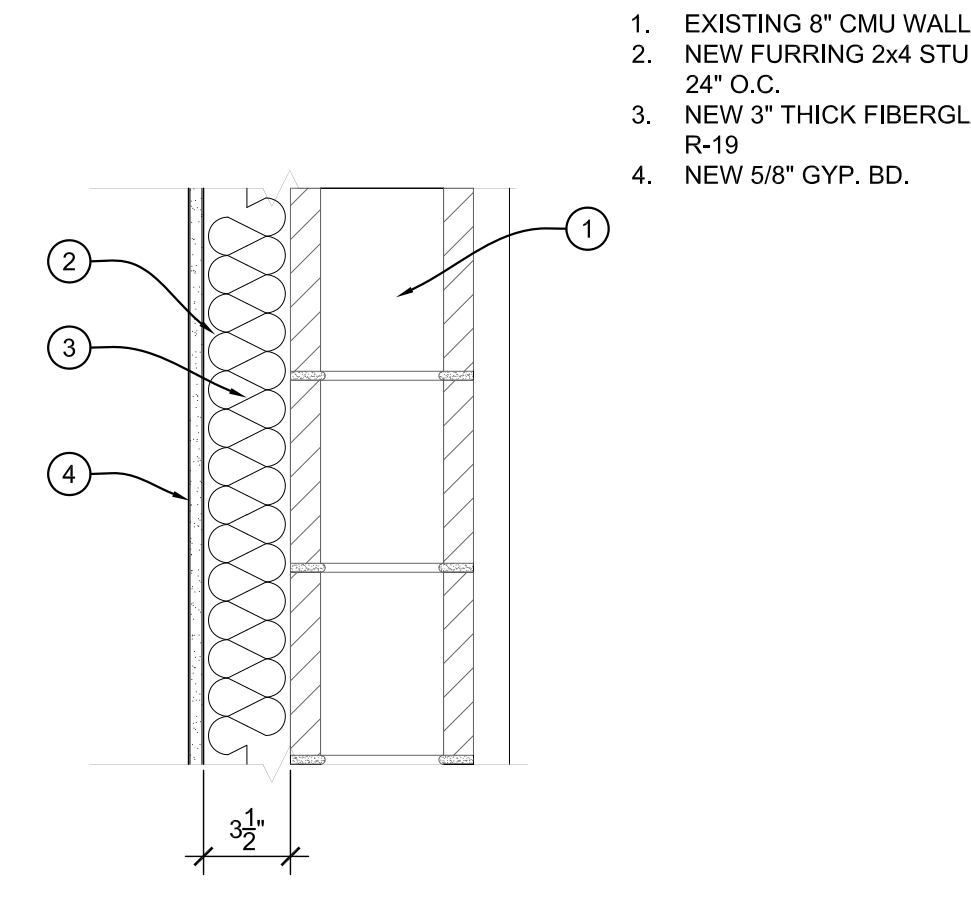
4 CEILING TO PARTITION WALL
 SCALE: 1-1/2"=1'-0"



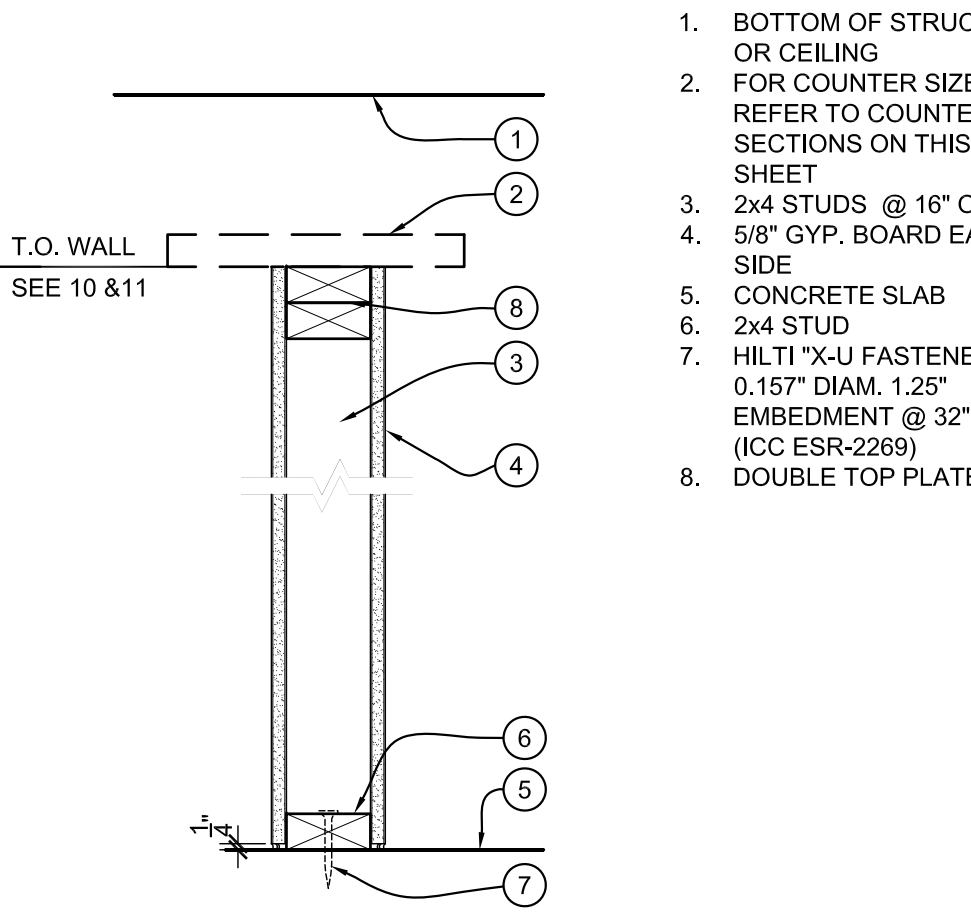
P1 PARTITION TYPE "P1"
 SCALE: 1-1/2"=1'-0" C1010-600



P2 PARTITION TYPE "P2"
 SCALE: 1-1/2"=1'-0" C1010-600



P3 PARTITION TYPE "P3"
 SCALE: 1-1/2"=1'-0" C1010-600



P4 PONY WALL
 SCALE: 1-1/2"=1'-0"

Project: HAIR SALON

Scale:

Revision:

No. Date Description

Issue:

Date Description

Project Number:

Title:

Details

Sheet:

D-1