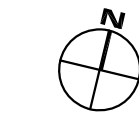


LEGEND	
HC	HOLLOW CORE
SC	SOLID CORE
FD	FRENCH DOOR
SH	SINGLE HUNG WINDOW
DH	DOUBLE HUNG WINDOW
FG	FIXED GLASS WINDOW
CSMT	CASEMENT WINDOW
FAT	FULL ARCHED TOP
S.A.T.	SEGMENTED ARCHED TOP
TRANS.	TRANSOM
A.F.F.	ABOVE FINISHED FLOOR
CO	CASED OPENING
KS	KNEE SPACE
E.C.	ENTERTAINMENT CENTER
H.B.	HOSE BIBB
F.C.	FLAT CEILING
G.B.	GLASS BLOCK
GL	GLASS
R.S.C.	ROUGH SAWN CEDAR

AREA CALCULATION		
FIRST FLOOR LIVABLE	3405.0	SF
SECOND FLOOR LIVABLE	1238.3	SF
TOTAL LIVABLE	4643.3	SF
GARAGE		
FRONT PORCH	791.9	SF
FIRST FLOOR UNDER THE ROOF	54.7	SF
TOTAL UNDER ROOF	4251.6	SF
BRICK LEDGE		
BRICK LEDGE	174.3	SF
TOTAL	5664.2	SF

- GENERAL NOTES**
- NATURAL GRADE IS 12" BELOW FINISH FLOOR @ 4'-0" U.N.O.
  - RECESS SLAB IN GARAGE 1-1/2" & SLOPE 1/4" PER FOOT
  - RECESS SLAB @ PATIOS 1-1/2" & SLOPE 1/4" PER FOOT
  - RECESS SLAB IN SHOWER 3-1/2"
  - FLOOR TRUSSES DESIGNED TO BE 1'-6" OPEN WEB W/1-1/8" STURDY FLOOR DECKING (FRAMING CONTRACTOR TO ADJUST IF TRUSS SIZE VARIES)
  - CENTER INTERIOR DOOR/OPENING IN HALLWAY/ROOM U.N.O.
  - IF DOOR ADJACENT TO WALL, TYPICAL R.O. DISTANCE IS 4" U.N.O.
  - GARAGE DOORS SHALL BE EQUIPPED WITH AUTOMATIC AND REMOTE DOOR OPENERS AND WILL REMAIN CLOSED WHEN NOT IN USE
  - INTERIOR AND EXTERIOR WALLS TYPICAL 2X4 STUDS, U.N.O. REFER TO ELEVATIONS FOR EXTERIOR FINISHES.
  - BRICK LEDGE TYPICAL 5.5" U.N.O.
- BEDROOM EGRESS WINDOWS**
- MINIMUM 5.7 S.F. OPENABLE AREA  
 MINIMUM 44" SILL HEIGHT  
 MINIMUM 20" CLEAR WIDTH  
 MINIMUM 24" CLEAR HEIGHT

**SECOND FLOOR PLAN**  
 SCALE: 1/4" = 1'-0"



Project:  
**CUSTOM HOME**

Scale:

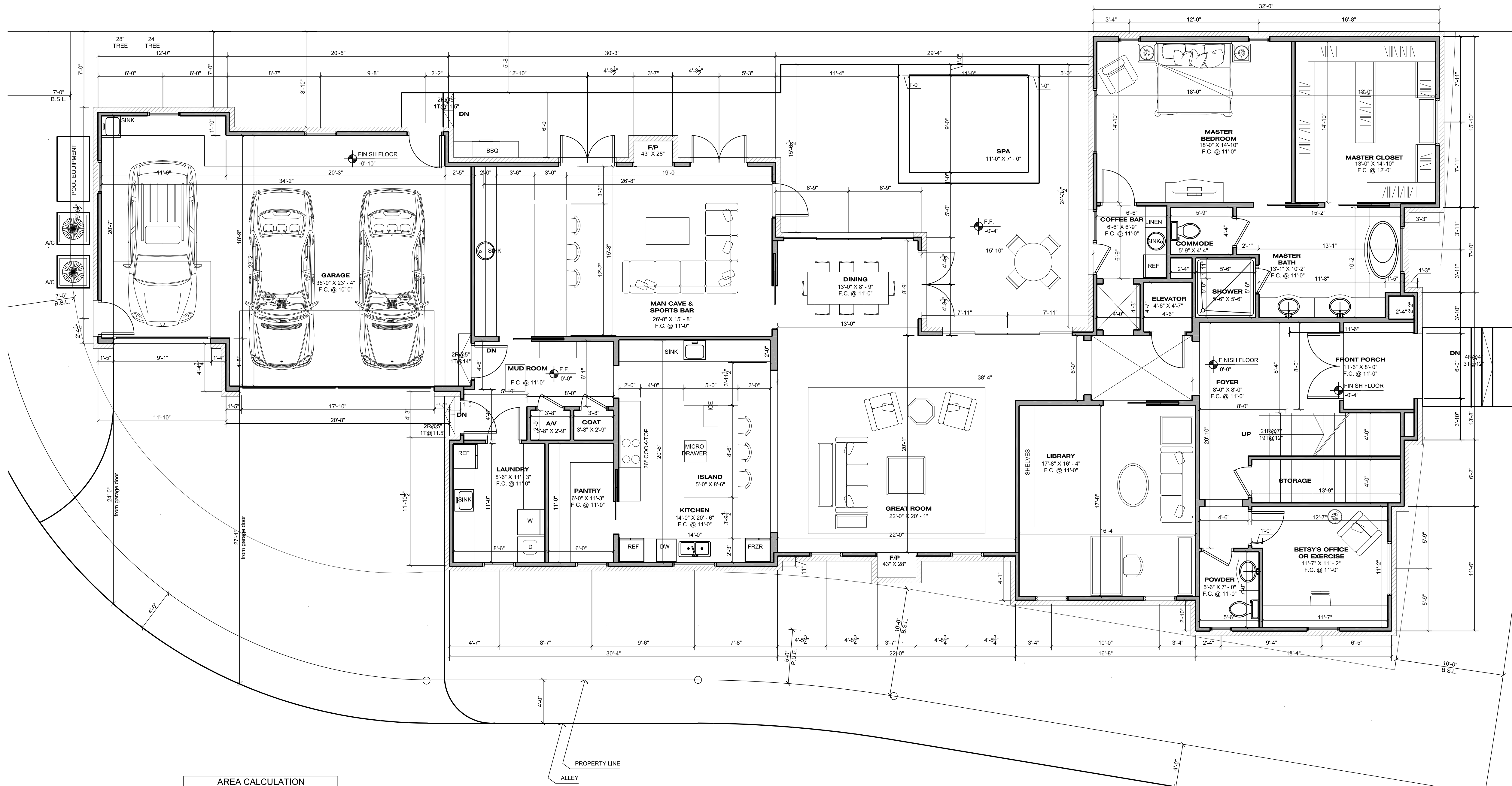
Revision:		
No.	Date	Description

Issue:  
 Date Description

Project Number:

Title:  
**Second Floor Plan**

Sheet:



AREA CALCULATION	
FIRST FLOOR LIVABLE	3405.0 SF
SECOND FLOOR LIVABLE	1238.3 SF
TOTAL LIVABLE	4643.3 SF
GARAGE	791.9 SF
FRONT PORCH	54.7 SF
FIRST FLOOR UNDER THE ROOF	4251.6 SF
TOTAL UNDER ROOF	5489.9 SF
BRICK LEDGE	174.3 SF
TOTAL	5664.2 SF

**FIRST FLOOR PLAN**  
SCALE: 1/4" = 1'-0"

Project:  
**CUSTOM HOME**

Scale:

Revision:  
No. Date Description

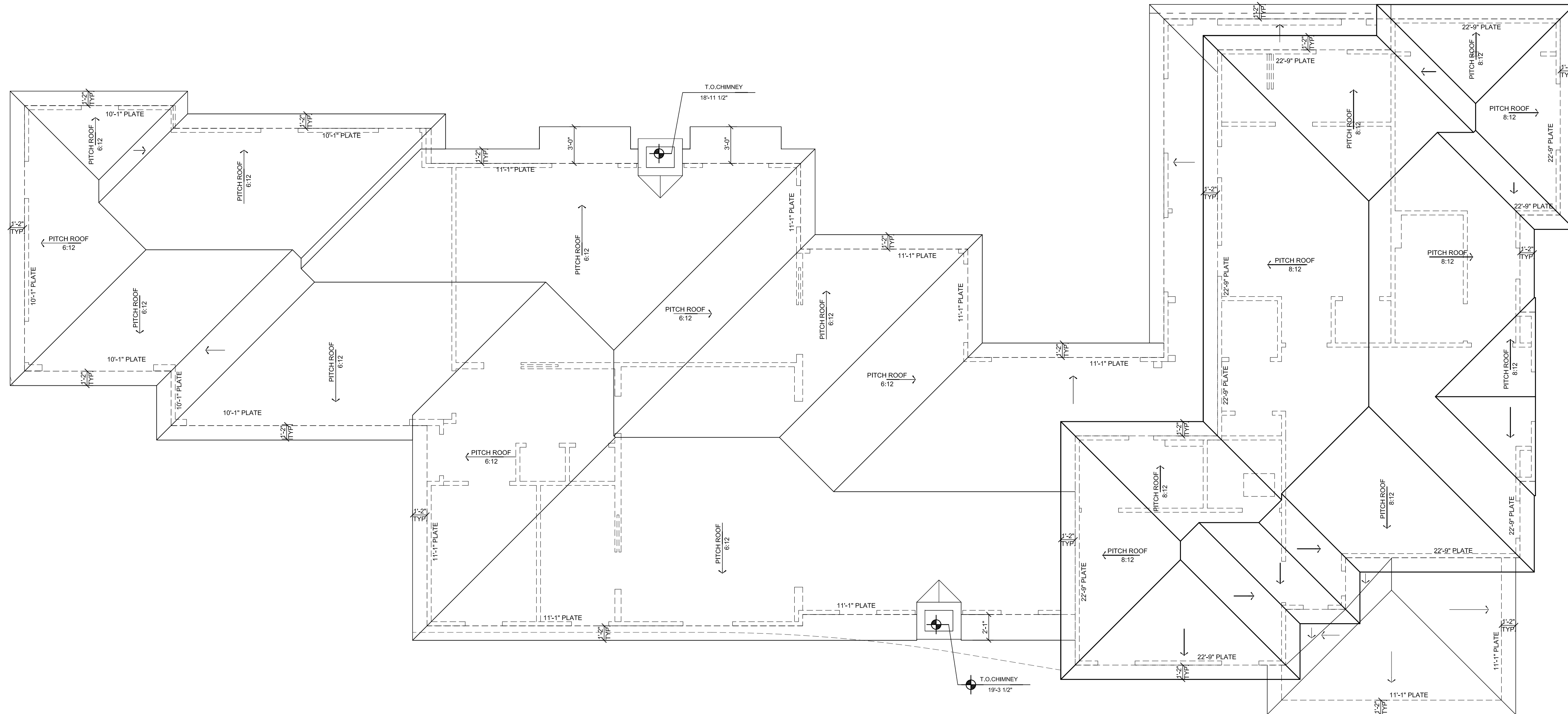
Issue:  
Date Description

Project Number:

Title:

**First Floor Plan**

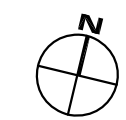
Sheet:



ROOFING MATERIAL:  
CONCRETE BARREL TILE  
WITH A MINIMUM 30 YEAR  
WEAR.  
PITCH 6" = 12", TYPICAL

ROOF HAS BEEN DESIGNED  
FOR 1-1/2" TRUSSES AND  
PLATE HEIGHTS AS NOTED.  
FRAMING CONTRACTOR TO  
ADJUST AS NECESSARY.

**ROOF PLAN**  
SCALE: 1/4" = 1'-0"



Project:  
**CUSTOM HOME**

Seal:

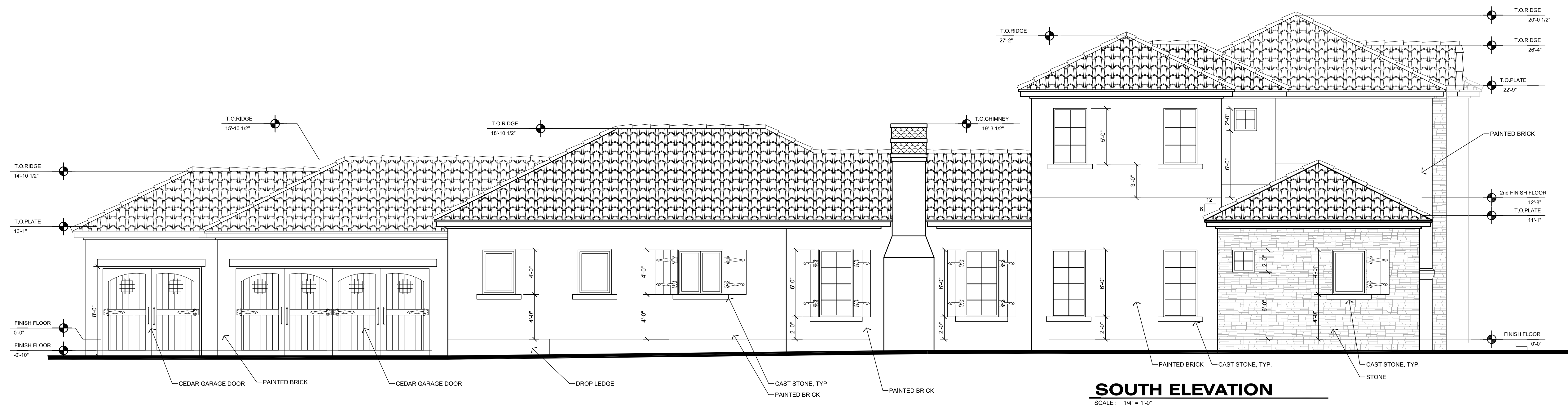
Revision:  
No. Date Description

Issue:  
Date Description

Project Number:

Title:  
**Roof Plan**

Sheet:



Project:  
**CUSTOM HOME**

Seal:

Revision:  
No. Date Description

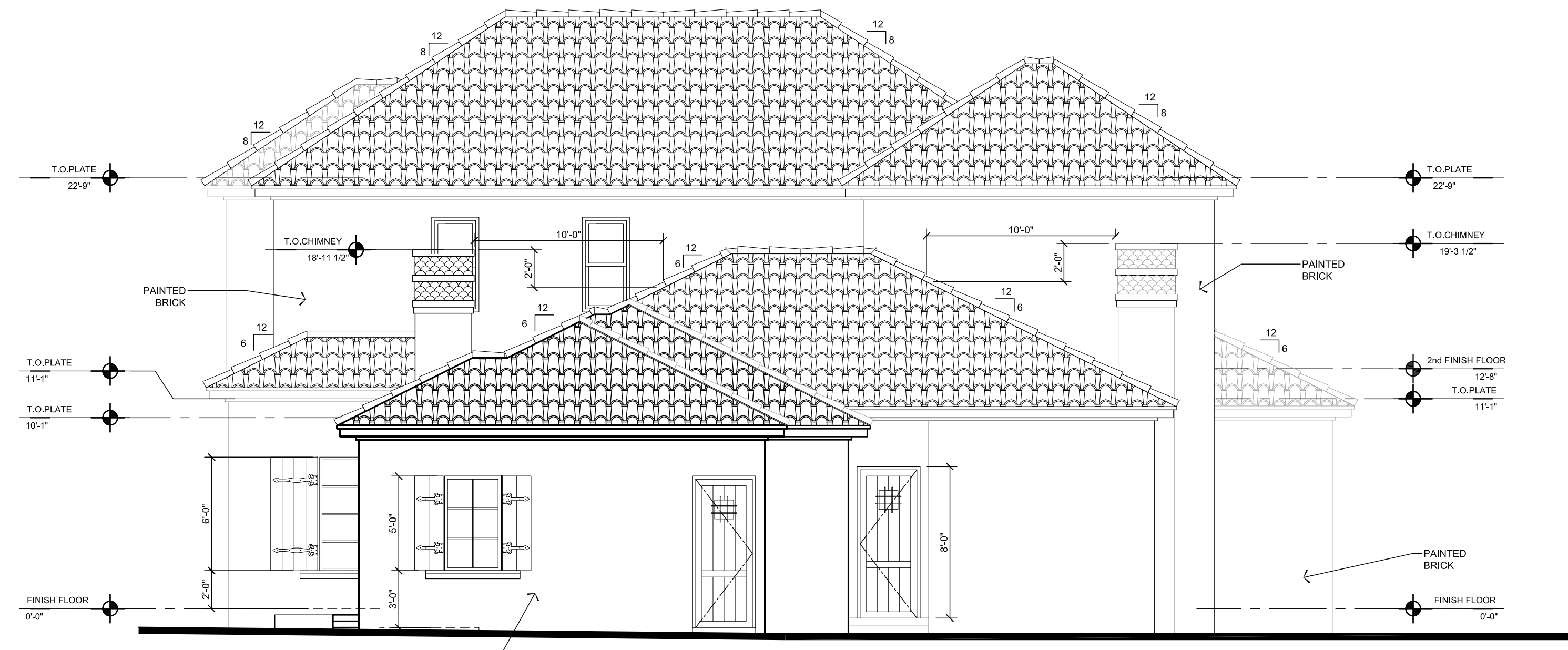
Issue:  
Date Description

Project Number:

Title:

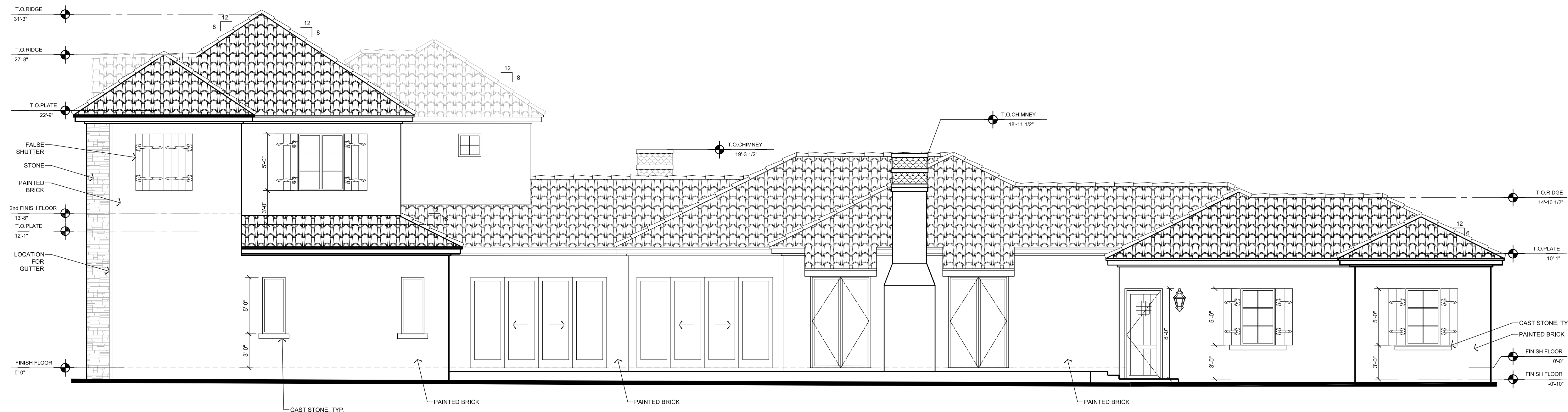
**Elevations**

Sheet:



**WEST ELEVATION**

SCALE: 1/4" = 1'-0"



**NORTH ELEVATION**

SCALE: 1/4" = 1'-0"

Project:  
**CUSTOM HOME**

Seal:

Revision:  
No. Date Description

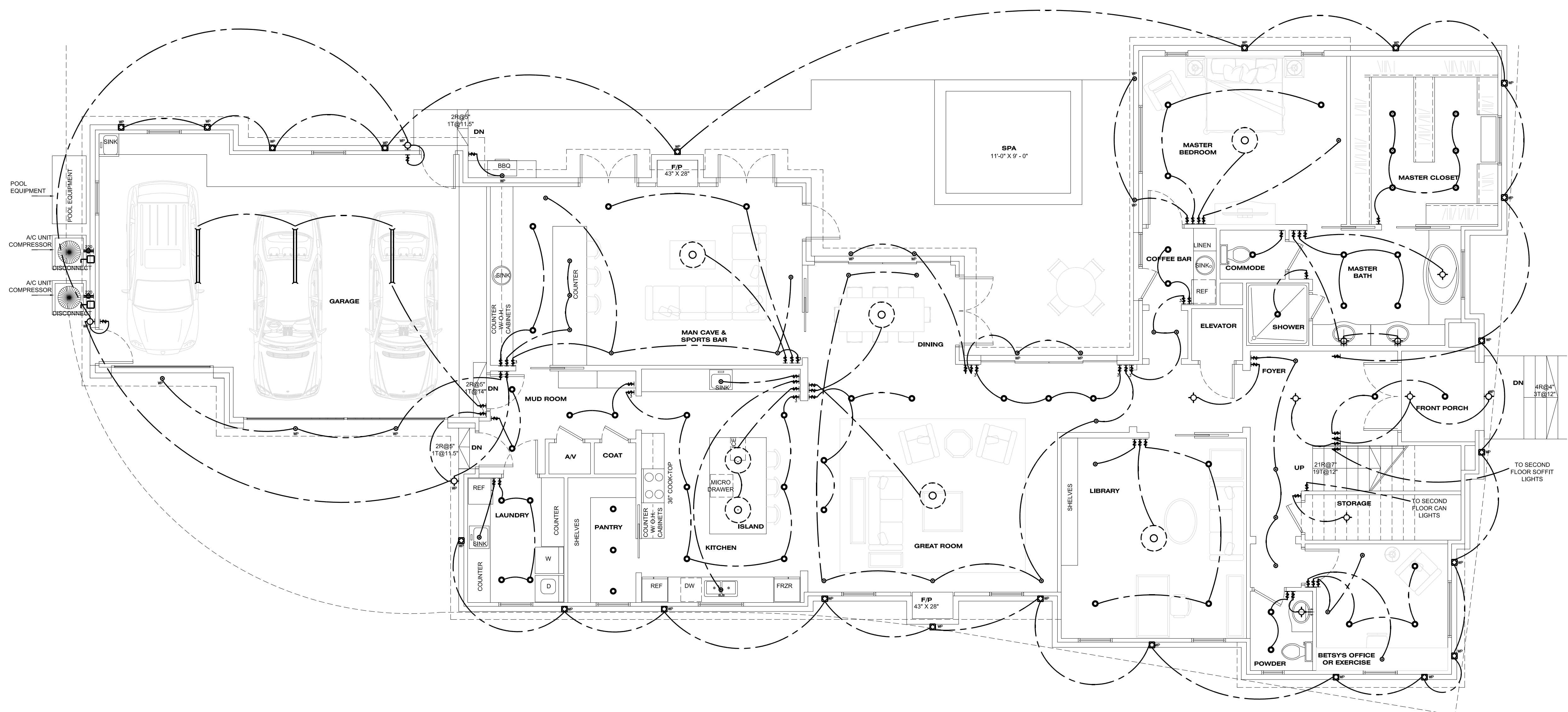
Issue:  
Date Description

Project Number:

Title:

**Elevations**

Sheet:



ELECTRICAL LEGEND	
	SKY LIGHT 12" x 24" SOLATURE
	LIGHT, CEILING MTD @ 48" UNLESS NOTED
	LIGHT, WALL MTD @ +80" U.N.O.
	CAN LIGHT, LED 4"D "1C" RATED.
	CAN LIGHT, LED 6"D "1C" RATED.
	PENDANT
	LIGHT, RECESSED IN CEILING, ADJUSTABLE
	LIGHT, RECESSED IN CEILING
	UPLIGHTS, 12" A.F.F.
	LIGHT, RECESSED IN WALL @ +12"
	TELEPHONE JACK @ +12" OR +44"
	TELEVISION JACK @ +12"
	PUSH BUTTON
	CHIME
	EXHAUST FAN TO OUTSIDE, 5 AIR CHANGES/HR. MIN.
	SWITCH, SINGLE POLE @ 48" UNLESS NOTED
	SWITCH, THREE-WAY
	SWITCH, FOUR-WAY
	DIMMER SWITCH
	RECEP. @ 12" UNLESS NOTED
	RECEP. ONE SIDE SWITCHED
	RECEP. 220V.
	RECEP., GFI, FAULT CRT. INTERCEPTOR @ +44"
	RECEP. WATER PROOF
	RECEP., RECESSED IN FLOOR
	RECEP., FOURPLEX
	SMOKE DETECTOR HARDWIRED WITH BATTERY BACK UP
	CARBON MONOXIDE DETECTOR HARDWIRED WITH BATTERY BACK UP
	WEATHERPROOF (RAINTIGHT)
	VAPOR PROOF
	UNLESS NOTED OTHERWISE
	OWNER PROVIDED CUSTOM LIGHT
	FIXTURE UNDER CABINET FLOOR
	DISCONNECT
	HOSE RECEPTACLE FOR "VAC U FLO" CENTRAL VACUUMING SYSTEM, MATERIAL & INSTALLATION PER MANUFACTURERS RECOMMENDATIONS.
	MOTIONED SENSORED SECURITY LIGHT
	TV DATA: POWER @ +60"

GENERAL NOTES	
A.	DWELLING UNIT BEDROOM RECEPTACEL OUTLETS SHALL BE PROTECTED BY ON ARC FAULT CIRCUIT-INTERUPTER 1999, N.E.C. SEC. 210-12

**FIRST FLOOR ELECTRICAL PLAN**

SCALE: 1/4" = 1'-0"



Project:  
**CUSTOM HOME**

Scale:

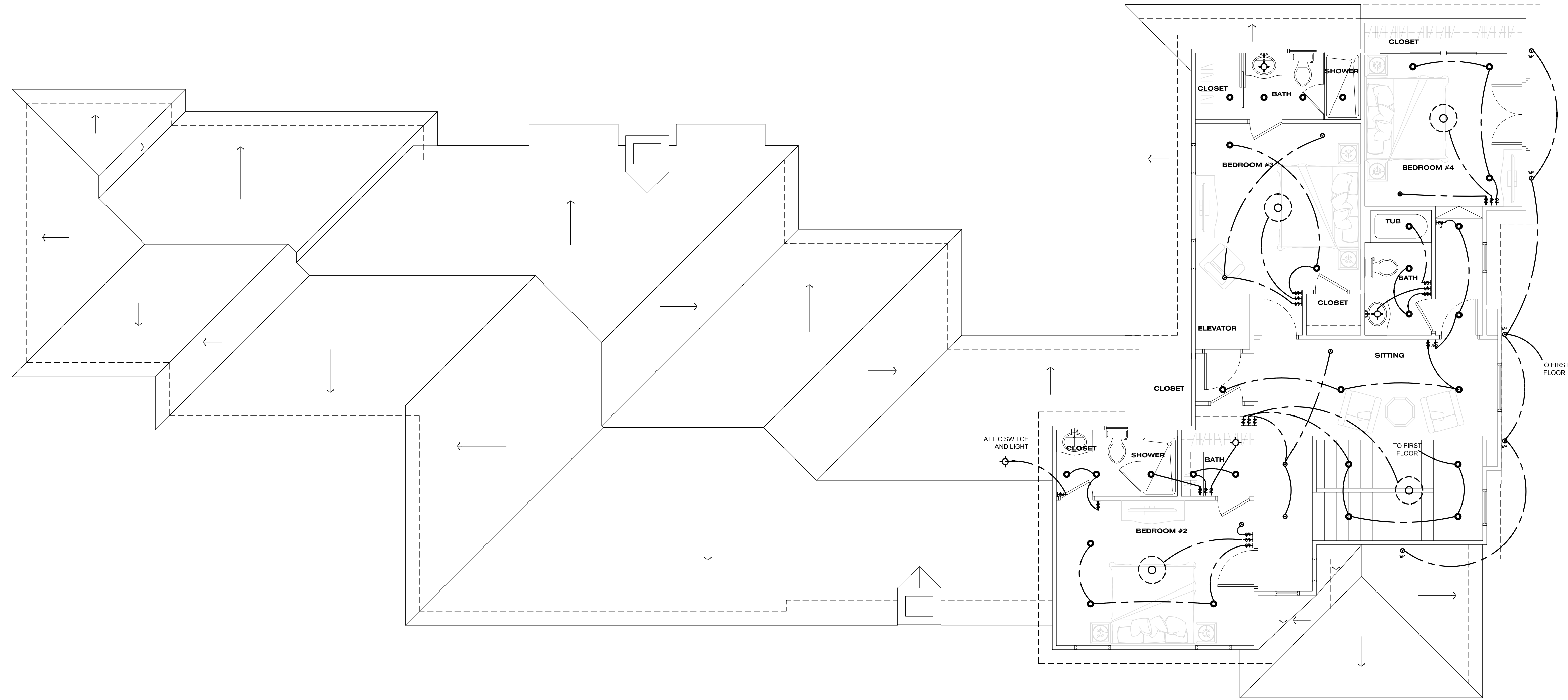
Revision:		
No.	Date	Description

Issue:	
Date	Description

Project Number:

Title:  
**First Floor Electrical Plan**

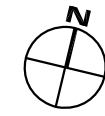
Sheet:



ELECTRICAL LEGEND		GENERAL NOTES	
	SKY LIGHT 12"Ø SOLATUBE		SWITCH, SINGLE POLE @ 48" UNLESS NOTED
	LIGHT, CEILING MTD		SWITCH, THREE-WAY
	LIGHT, WALL MTD. @ +80" U.N.O.		SWITCH, FOUR-WAY
	CAN LIGHT, LED 4"Ø 10" RATED.		DIMMER SWITCH
	CAN LIGHT, LED 6"Ø 10" RATED.		RECEP. @ 12" UNLESS NOTED
	PENDENT		RECEP. ONE SIDE SWITCHED
	LIGHT, RECESSED IN CEILING, ADJUSTABLE		RECEP. 220V.
	LIGHT, RECESSED IN CEILING		RECEP., GRD. FAULT CRT. INTERCEPTOR @ +44"
	LIGHT, RECESSED IN WALL @ +12"		RECEP. WATER PROOF
	TELEPHONE JACK @ +12" OR +44"		RECEP., RECESSED IN FLOOR
	TELEVISION JACK @ +12"		RECEP., FOURPLEX
	PUSH BUTTON		SMOKE DETECTOR HARDWIRED WITH BATTERY BACK UP
	CHIME		CARBON MONOXIDE DETECTOR HARDWIRED WITH BATTERY BACK UP
	EXHAUST FAN TO OUTSIDE, 5 AIR CHANGES/HR. MIN.		WEATHERPROOF (RAINTIGHT)
			VAPOR PROOF
			UNLESS NOTED OTHERWISE
			OWNER PROVIDED CUSTOM LIGHT
			FIXTURE UNDER CABINET FLOOR
			DISCONNECT
			HOSE RECEPTACLE FOR "VAC U FLO" CENTRAL VACUUMING SYSTEM. MATERIAL & INSTALLATION PER MANUFACTURERS RECOMMENDATIONS.
			MOTIONED SENSORED SECURITY LIGHT
			TV DATA: POWER @ +60"
		<b>A.</b>	DWELLING UNIT BEDROOM RECEPTACLE OUTLETS SHALL BE PROTECTED BY ON ARC FAULT CIRCUIT-INTERRUPTER 1999, N.E.C. SEC. 210-12

**SECOND FLOOR PLAN**

SCALE: 1/4" = 1'-0"



Project:  
**CUSTOM HOME**

Seal:

Revision:		
No.	Date	Description

Issue:	
Date	Description

Project Number:

Title:  
**Second Floor  
Electrical Plan**

Sheet: