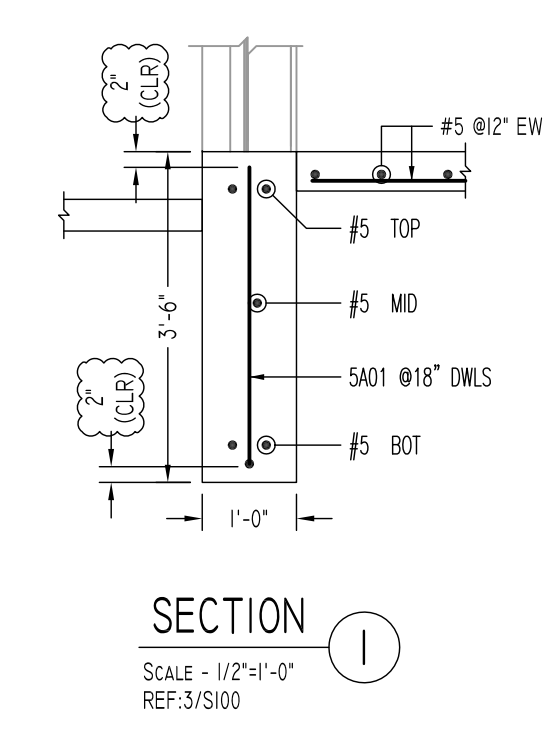
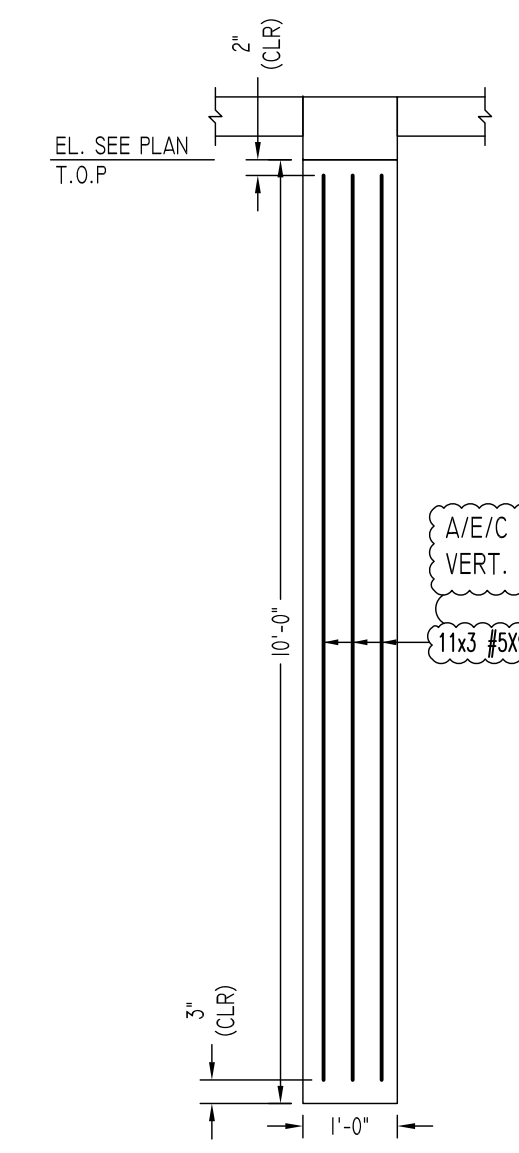


FOUNDATION PLAN AND REINF. DETAILS
 SCALE - 1/4"=1'-0"
 REF: S101

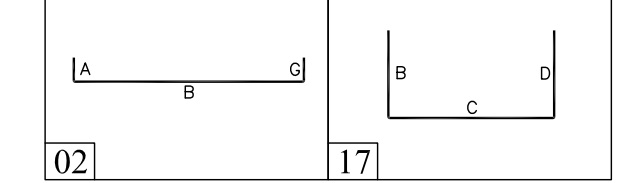


SECTION I
 SCALE - 1/2"=1'-0"
 REF: S100



TYPICAL DRILLED PIER DETAIL
 SCALE - 1/2"=1'-0"
 REF: S100

Release Code: R1		BENDING DETAILS.														
Bar Mark	Qty	Size	Total length	Type	'A'	'B'	'C'	'D'	'E'	'F'	'G'	'H'	'J'	'K'	'U'	'W'
SA01	68	#5	4'0"2		10"	37"										
SA02	6	#5	57"17			27"	27"									
SA03	9	#5	6'10"17			35"	35"									



ABBREVIATIONS			
TOP	T	EACH SIDE	ES
BOTTOM	B	EACH FACE	EF
TOP&BOTTOM	T&B	OUTER FACE	OF
LONG WAY BAR	LW	INNER FACE	IF
SHORT WAY BAR	SW	DOWEL	Dwl.
CORNER BAR	Cor.	TOP OF FOOTING	T.O.F
DOWEL/VERTICAL	D/V	TOP OF PIER	T.O.PIER
HORIZONTAL	H	TOP OF SLAB	T.O.SLAB
EACH WAY	EW		
SUPPORT BAR	SB		

NOTES:-
 A. TYPICAL CLEARANCES
 I. FOR FOOTING BOTTOM - 2" & SIDE {3"}
 II. FOOTING TOP - 2"
 III. FOR CONC. WALL AND S.O.G - 2"
 B. A/E/C PLEASE VERIFY THE ALL CLOUDED ITEMS
 C. CUT TO FIT AT SITE AS REQUIRED
 D. BARS TO BE PLACED AT EQUAL SPACING U.O.N
 E. TILT HOOK TO ACCOMMODATE THE COVER, IF NEED

**ALL BARS IN THIS DRAWING
 ASTM A615 GRADE 60
 BLACK UNCOATED**

CONCRETE FTG & WALL		
LAP SCHEDULE (4000 PSI) CLASS-B		
BAR DIA	TOP	OTHERS
#4	33"	25"
#5	41"	31"
#6	49"	37"
#7	71"	54"
#8	81"	62"

SLAB ON GRADE		
LAP SCHEDULE (3000 PSI) CLASS-B		
BAR DIA	TOP	OTHERS
#4	38"	29"
#5	47"	36"
#6	56"	43"
#7	81"	63"
#8	93"	72"

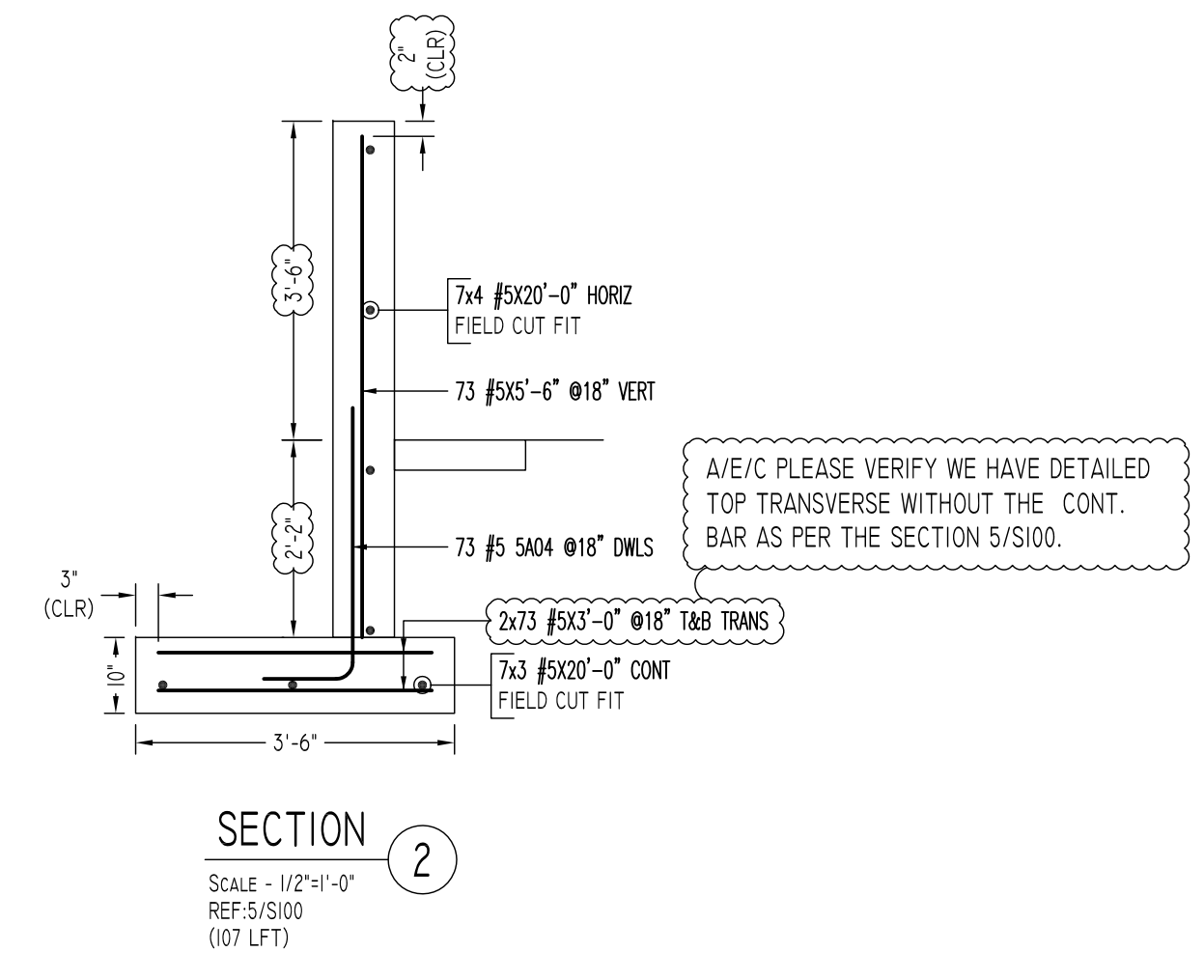
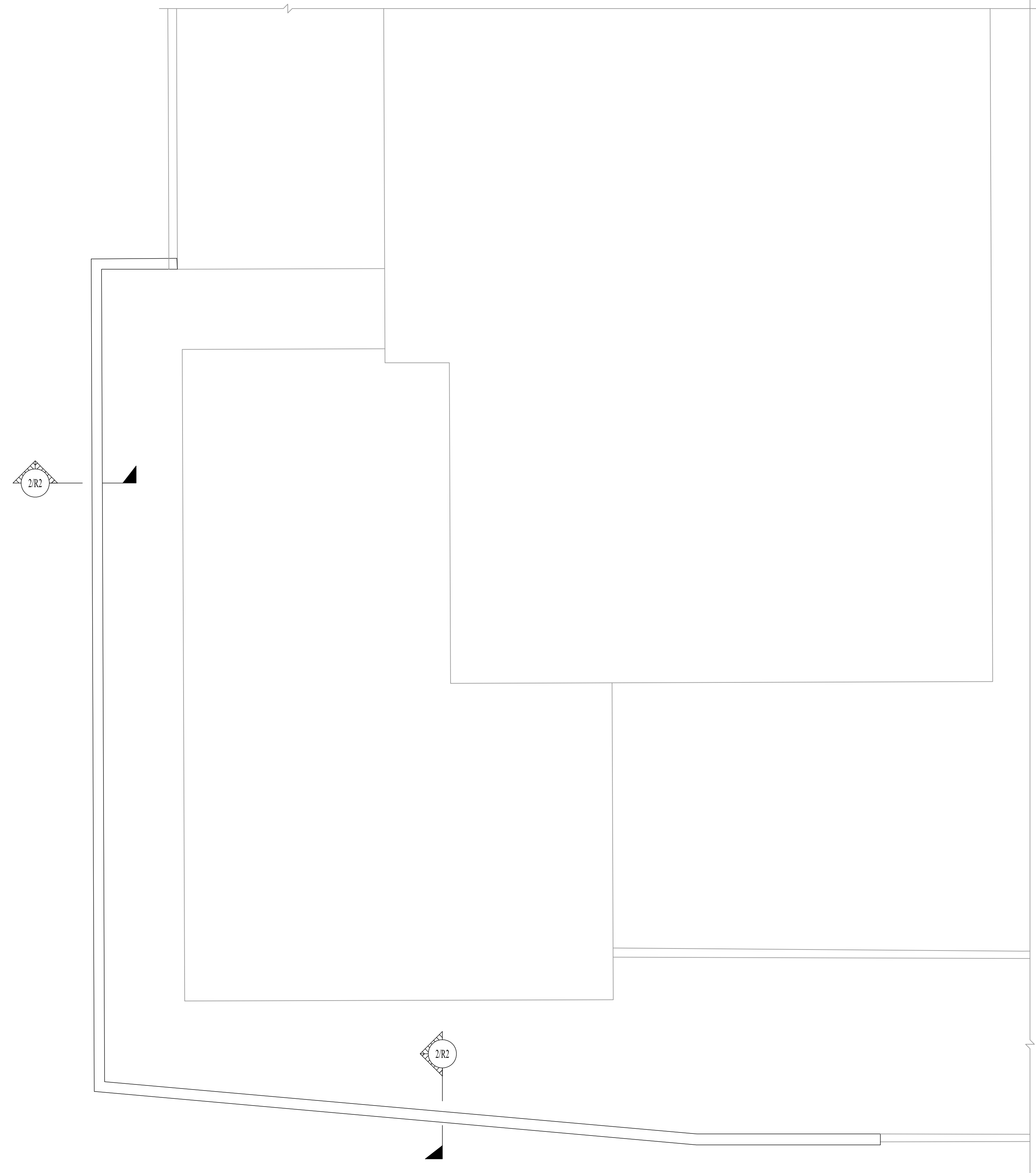
JOB: FLEISCHMANN FAMILY DENTISTRY
LOC.: BROOMFIELD, COLORADO
DESC.: FOUNDATION PLAN AND REINF. DETAILS
CONTR.:

REVISION		
REV	DATE	SENT FOR APPROVAL
0	10/07/25	

SHEET NUMBER

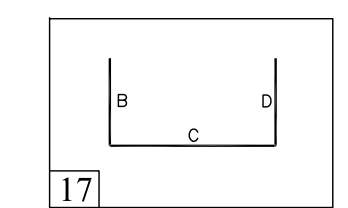
R1

PROJECT NO.



Release Code: R2

Bar Mark	Qty	Size	fold	length	type	A'	B'	C'	D'	E'	F'	G'	H'	I'	J'	K'	L'
5AN	73	#5		4'9"	D			3'0"	1'0"								



ABBREVIATIONS			
TOP	T	EACH SIDE	ES
BOTTOM	B	EACH FACE	EF
TOP&BOTTOM	T&B	OUTER FACE	OF
LONG WAY BAR	LW	INNER FACE	IF
SHORT WAY BAR	SW	DOWEL	Dwl.
CORNER BAR	Cor.	TOP OF FOOTING	T.O.F
DOWEL/VERTICAL	D/V	TOP OF PIER	T.O.PIER
HORIZONTAL	H	TOP OF SLAB	T.O.SLAB
EACH WAY	EW		
SUPPORT BAR	SB		

NOTES:-
 A. TYPICAL CLEARANCES
 I. FOR FOOTING BOTTOM - 3' & SIDE - 3'
 II. FOOTING TOP - 2"
 III. FOR CONC. WALL - 2"
 B. A/E/C PLEASE VERIFY THE ALL CLOUDED ITEMS
 C. CUT TO FIT AT SITE AS REQUIRED
 D. BARS TO BE PLACED AT EQUAL SPACING U.O.N
 E. TILT HOOK TO ACCOMMODATE THE COVER, IF NEED

CONCRETE FTG & WALL

LAP SCHEDULE (4000 PSI) CLASS-B		
BAR DIA	TOP	OTHERS
#4	33"	25"
#5	41"	31"
#6	49"	37"
#7	71"	54"
#8	81"	62"

ALL BARS IN THIS DRAWING
 ASTM A615 GRADE 60
 BLACK UNCOATED

N
 |
 NORTH
SITE WORK REINF. DETAILS
 SCALE - 1/4"=1'-0"
 REF: C2

JOB: FLEISCHMANN FAMILY DENTISTRY
 LOC.: BROOMFIELD, COLORADO
 DESC.: SITE WORK REINF. DETAILS
 CONTR.: -

REVISION		
REV	DATE	SENT FOR
0	10/07/25	APPROVAL

SHEET NUMBER
 R2
 PROJECT NO.
 -